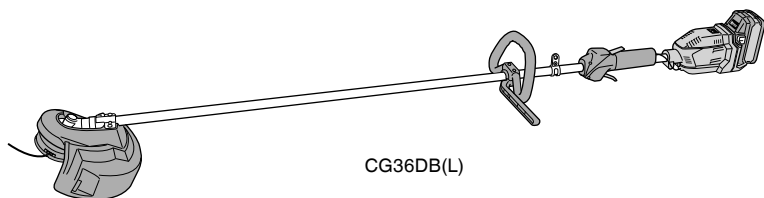
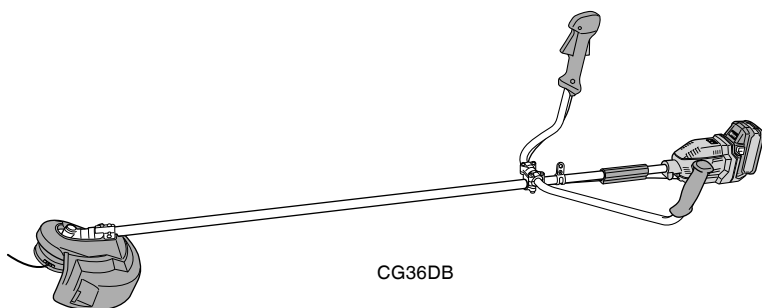


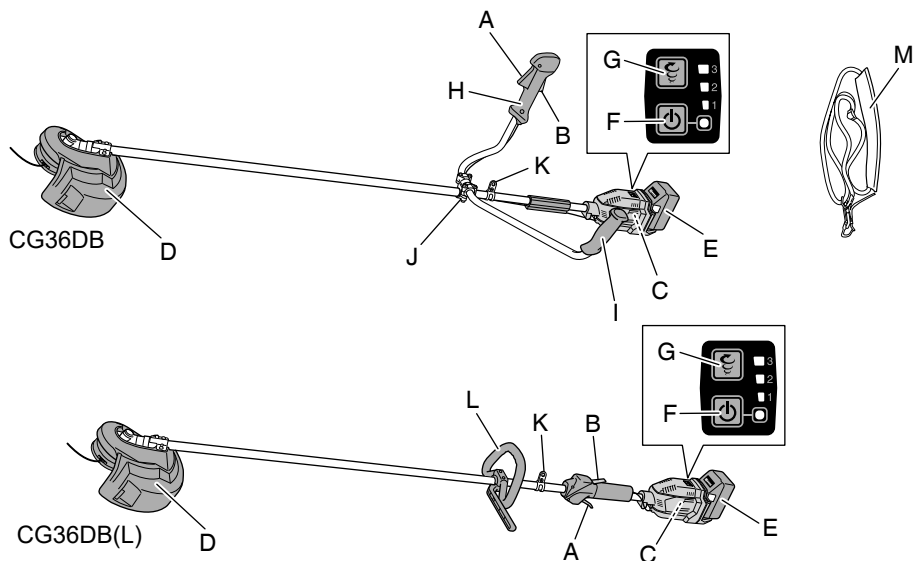
## CG 36DB • CG 36DB(L)

---

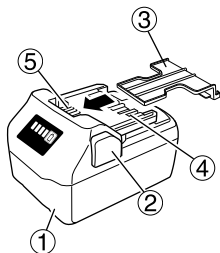


Handling instructions

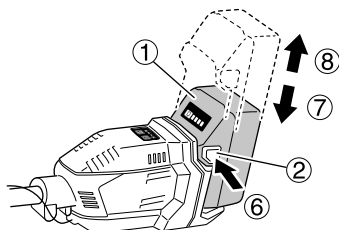
1



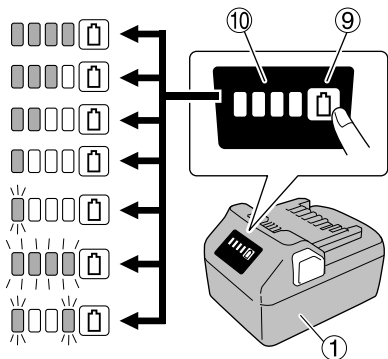
2



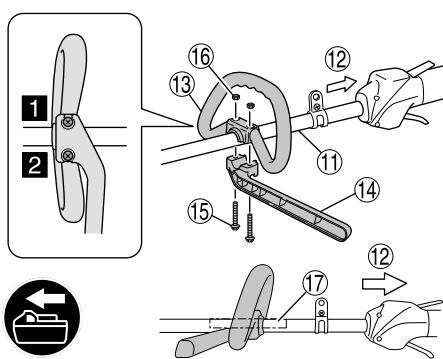
3



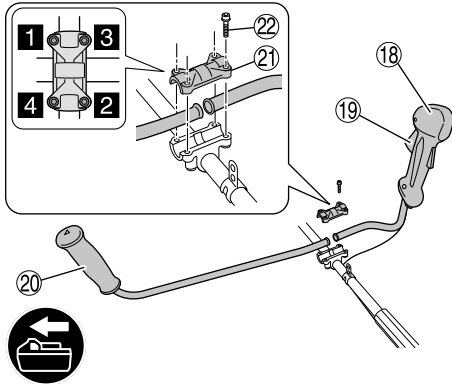
4



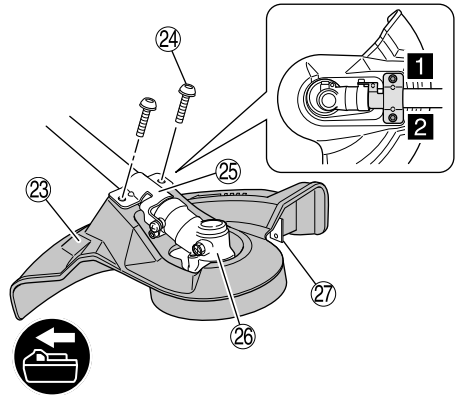
5



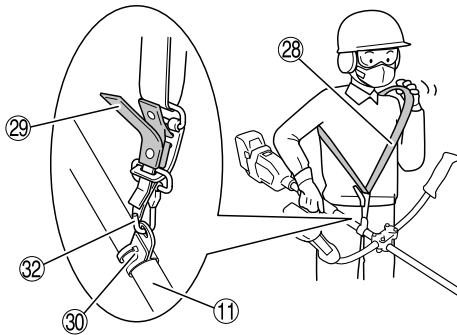
6



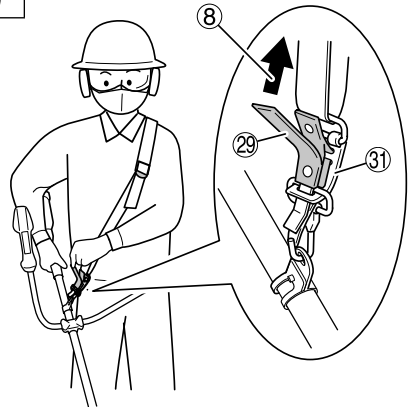
7



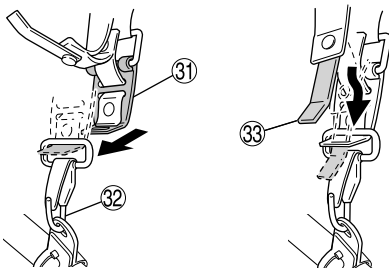
8



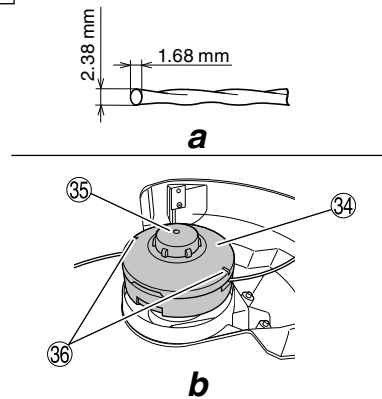
9



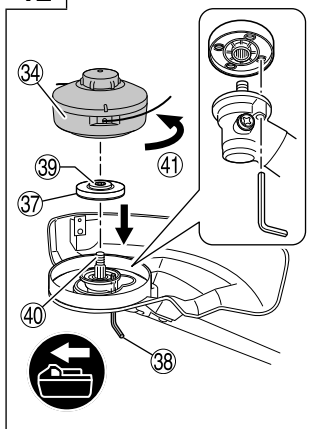
10



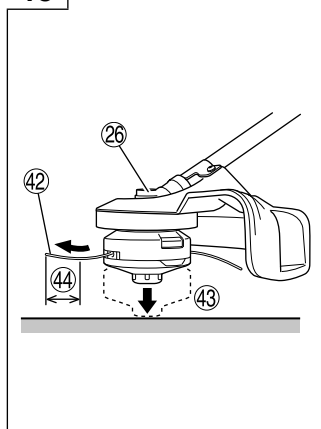
11



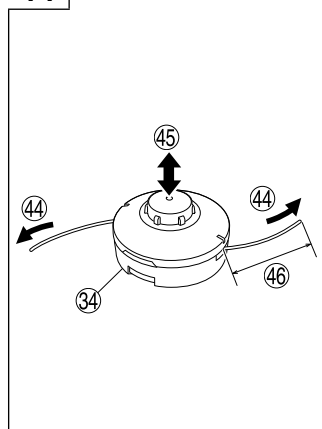
12



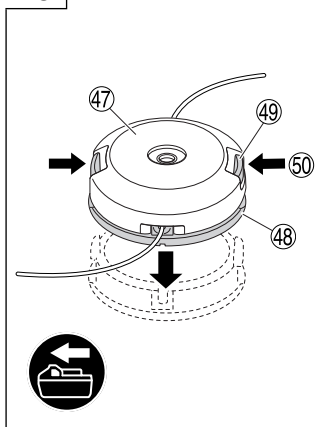
13



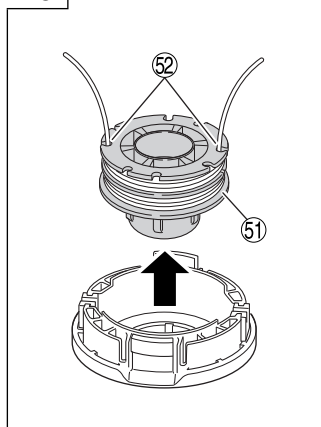
14



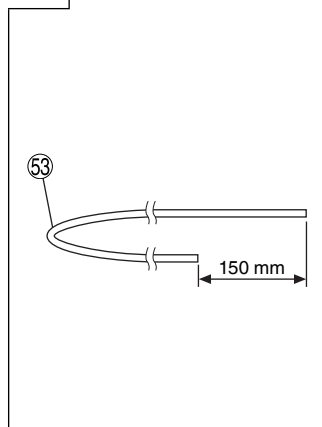
15



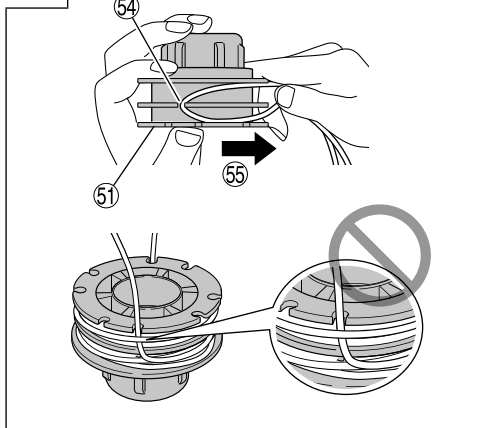
16



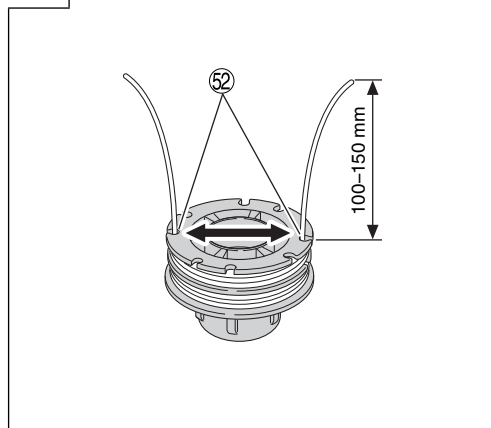
17



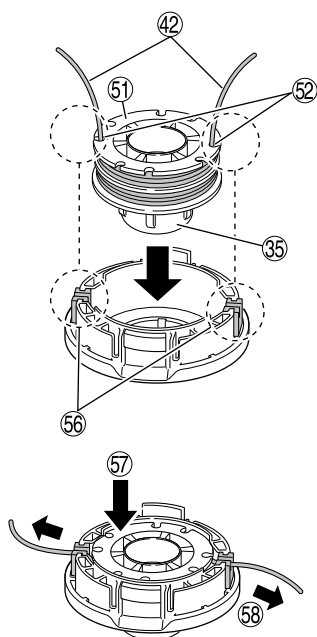
18



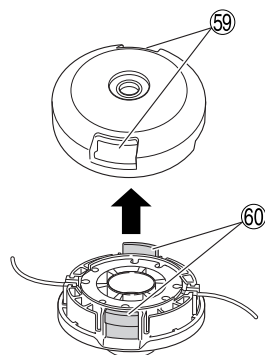
19



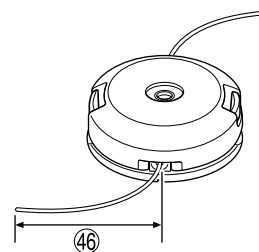
20



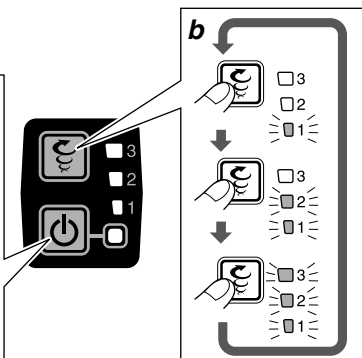
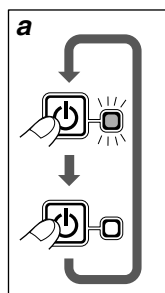
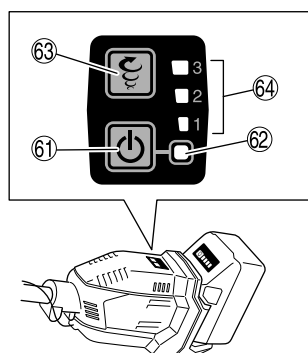
21



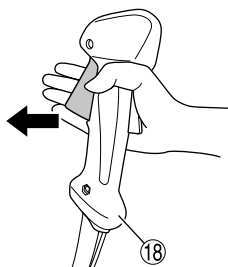
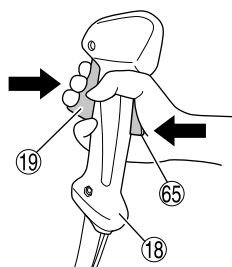
22



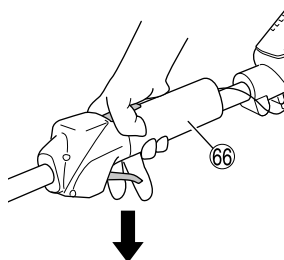
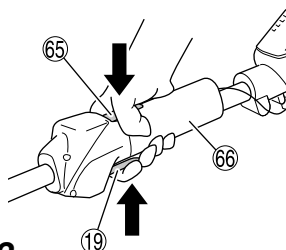
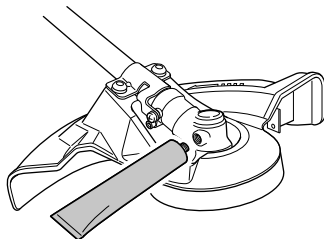
23



[CG36DB]

**a-1**


















[CG36DB(L)]





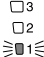


**a-2**

## SYMBOLS

### WARNING

The following show symbols used for the machine. Be sure that you understand their meaning before use.

	CG36DB / CG36DB(L): Cordless Grass Trimmer
	To reduce the risk of injury, user must read instruction manual.
	Always wear eye protection.
	Always wear hearing protection.
	Do not use a power tool in the rain and moisture or leave it outdoors when it is raining.
	Keep bystanders away.
	Remove battery before adjusting or cleaning and before leaving the machine unattended for any period.
	It is important that you read, fully understand and observe the following safety precautions and warnings. Careless or improper use of the unit may cause serious or fatal injury.
	Read, understand and follow all warnings and instructions in this manual and on the unit.
	Prohibited action
	Always wear eye, head and ear protectors when using this unit.
	Keep all children, bystanders and helpers 15 m away from the unit. If anyone approaches you, stop the unit and cutting attachment immediately.
	Be careful of thrown objects.
	Shows maximum shaft speed. Do not use the cutting attachment whose max rpm is below the shaft rpm.
	Gloves should be worn when necessary, e.g., when assembling cutting equipment.
	Use anti-slip and sturdy footwear.
	Blade thrust may occur when the spinning blade contacts a solid object in the critical area. A dangerous reaction may occur causing the entire unit and operator to be thrust violently. This reaction is called blade thrust. As a result, the operator may lose control of the unit which may cause serious or fatal injury. Blade thrust is more likely to occur in areas where it is difficult to see the material to be cut.

	Power switch
	Switching on
	Switching off
	Mode switch
	Eco mode
	Normal mode
	Power mode

## WHAT IS WHAT? (Fig. 1)

- A: Lever: Trigger for activating the unit.  
 B: Lock lever: Lever that prevents the accidental operation of the trigger.  
 C: Motor: Battery-driven motor.  
 D: Guard: Protects operator from flying debris.  
 E: Battery (sold separately): Power source to drive the unit.  
 F: Power switch: Switch for switching the units power unit's power ON or OFF.  
 G: Mode switch: Switch for adjusting the speed of the motor.  
 H: Handle right: Handle with lever located on the right side of the unit.  
 I: Handle left: Handle located on the left side of the unit.  
 J: Handle fixture: Secures the handles to the unit.  
 K: Hanger: Used for attaching a shoulder belt to the unit.  
 L: Loop handle  
 M: Shoulder belt: Harness with release mechanism.

## GENERAL POWER TOOL SAFETY WARNINGS

### WARNING

**Read all safety warnings and all instructions.**

*Failure to follow the warnings and instructions may result in electric shock, fire and/or serious injury.*

**Save all warnings and instructions for future reference.**  
The term "power tool" in the warnings refers to your mains-operated (corded) power tool or battery-operated (cordless) power tool.

#### 1) Work area safety

- a) **Keep work area clean and well lit.**  
*Cluttered or dark areas invite accidents.*
- b) **Do not operate power tools in explosive atmospheres, such as in the presence of flammable liquids, gases or dust.**  
*Power tools create sparks which may ignite the dust or fumes.*
- c) **Keep children and bystanders away while operating a power tool.**  
*Distractions can cause you to lose control.*

#### 2) Electrical safety

- a) **Power tool plugs must match the outlet.**  
**Never modify the plug in any way.**  
**Do not use any adapter plugs with earthed (grounded) power tools.**  
*Unmodified plugs and matching outlets will reduce risk of electric shock.*
- b) **Avoid body contact with earthed or grounded surfaces, such as pipes, radiators, ranges and refrigerators.**  
*There is an increased risk of electric shock if your body is earthed or grounded.*
- c) **Do not expose power tools to rain or wet conditions.**  
*Water entering a power tool will increase the risk of electric shock.*
- d) **Do not abuse the cord. Never use the cord for carrying, pulling or unplugging the power tool.**  
**Keep cord away from heat, oil, sharp edges or moving parts.**  
*Damaged or entangled cords increase the risk of electric shock.*
- e) **When operating a power tool outdoors, use an extension cord suitable for outdoor use.**  
*Use of a cord suitable for outdoor use reduces the risk of electric shock.*
- f) **If operating a power tool in a damp location is unavoidable, use a residual current device (RCD) protected supply.**  
*Use of an RCD reduces the risk of electric shock.*

#### 3) Personal safety

- a) **Stay alert, watch what you are doing and use common sense when operating a power tool.**  
**Do not use a power tool while you are tired or under the influence of drugs, alcohol or medication.**  
*A moment of inattention while operating power tools may result in serious personal injury.*
- b) **Use personal protective equipment. Always wear eye protection.**  
*Protective equipment such as dust mask, non-skid safety shoes, hard hat, or hearing protection used for appropriate conditions will reduce personal injuries.*
- c) **Prevent unintentional starting. Ensure the switch is in the off position before connecting to power source and/or battery pack, picking up or carrying the tool.**

*Carrying power tools with your finger on the switch or energising power tools that have the switch on invites accidents.*

- d) **Remove any adjusting key or wrench before turning the power tool on.**  
*A wrench or a key left attached to a rotating part of the power tool may result in personal injury.*
  - e) **Do not overreach. Keep proper footing and balance at all times.**  
*This enables better control of the power tool in unexpected situations.*
  - f) **Dress properly. Do not wear loose clothing or jewellery. Keep your hair, clothing and gloves away from moving parts.**  
*Loose clothes, jewellery or long hair can be caught in moving parts.*
  - g) **If devices are provided for the connection of dust extraction and collection facilities, ensure these are connected and properly used.**  
*Use of dust collection can reduce dust related hazards.*
- #### 4) Power tool use and care
- a) **Do not force the power tool. Use the correct power tool for your application.**  
*The correct power tool will do the job better and safer at the rate for which it was designed.*
  - b) **Do not use the power tool if the switch does not turn it on and off.**  
*Any power tool that cannot be controlled with the switch is dangerous and must be repaired.*
  - c) **Disconnect the plug from the power source and/or the battery pack from the power tool before making any adjustments, changing accessories, or storing power tools.**  
*Such preventive safety measures reduce the risk of starting the power tool accidentally.*
  - d) **Store idle power tools out of the reach of children and do not allow persons unfamiliar with the power tool or these instructions to operate the power tool.**  
*Power tools are dangerous in the hands of untrained users.*
  - e) **Maintain power tools. Check for misalignment or binding of moving parts, breakage of parts and any other condition that may affect the power tool's operation.**  
**If damaged, have the power tool repaired before use.**  
*Many accidents are caused by poorly maintained power tools.*
  - f) **Keep cutting tools sharp and clean.**  
*Properly maintained cutting tools with sharp cutting edges are less likely to bind and are easier to control.*
  - g) **Use the power tool, accessories and tool bits etc. in accordance with these instructions, taking into account the working conditions and the work to be performed.**  
*Use of the power tool for operations different from those intended could result in a hazardous situation.*
- #### 5) Battery tool use and care
- a) **Recharge only with the charger specified by the manufacturer.**  
*A charger that is suitable for one type of battery pack may create a risk of fire when used with another battery pack.*
  - b) **Use power tools only with specifically designated battery packs.**  
*Use of any other battery packs may create a risk of injury and fire.*



- c) **When battery pack is not in use, keep it away from other metal objects, like paper clips, coins, keys, nails, screws or other small metal objects, that can make a connection from one terminal to another.**

*Shorting the battery terminals together may cause burns or a fire.*

- d) **Under abusive conditions, liquid may be ejected from the battery; avoid contact. If contact accidentally occurs, flush with water. If liquid contacts eyes, additionally seek medical help.**

*Liquid ejected from the battery may cause irritation or burns.*

## 6) Service

- a) **Have your power tool serviced by a qualified repair person using only identical replacement parts.**

*This will ensure that the safety of the power tool is maintained.*

## PRECAUTION

**Keep children and infirm persons away.**

**When not in use, tools should be stored out of reach of children and infirm persons.**

- after striking a foreign object to inspect the machine for damage;
- if the machine starts to vibrate abnormally, for immediately check.

- g) Take care against injury to feet and hands from the cutting means.

- h) Always ensure that the ventilation openings are kept clear of debris.

- i) Never modify the unit/machine in any way. Do not use your unit/machine for any job except that for which it is intended.

## ● Maintenance, transport and storage

- a) Disconnect the machine from the power supply (i.e. remove the plug from the mains or remove the disabling device) before carrying out maintenance or cleaning work.

- b) Use only the manufacturer's recommended replacement parts and accessories.

- c) Inspect and maintain the machine regularly. Have the machine repaired only by an authorized repairer.

- d) When not in use, store the machine out of the reach of children.

- e) When transporting in a vehicle or storage, cover blade with blade cover.

## GRASS TRIMMER SAFETY WARNINGS

### IMPORTANT

**READ CAREFULLY BEFORE USE  
KEEP FOR FUTURE REFERENCE**

### Safe operation practices

#### ● Training

- a) Read the instructions carefully. Be familiar with the controls and the correct use of the machine.
- b) Never allow people unfamiliar with these instructions or children to use the machine. Local regulations can restrict the age of the operator.
- c) Keep in mind that the operator or user is responsible for accidents or hazards occurring to other people or their property.

#### ● Preparation

- a) Before use check the supply and extension cord for signs of damage or aging. If the cord becomes damaged during use, disconnect the cord from the supply immediately.

**DO NOT TOUCH THE CORD BEFORE DISCONNECTING THE SUPPLY.**

Do not use the machine if the cord is damaged or worn.

- b) Before use, always visually inspect the machine for damaged, missing or misplaced guards or shields.
- c) Never operate the machine while people, especially children, or pets are nearby.
- d) Never replace nylon head with metallic cutting means.

#### ● Operation

- a) Wear eye protection, stout shoes and long trousers at all times while operating the machine.
- b) Avoid using the machine in bad weather conditions especially when there is a risk of lightning.
- c) Use the machine only in daylight or good artificial light.
- d) Never operate the machine with damaged guards or shields or without guards or shields in place.
- e) Switch on the motor only when the hands and feet are away from the cutting means.
- f) Always disconnect the machine from the power supply (i.e. remove the plug from the mains or remove the disabling device)
  - whenever the machine is left user;
  - before clearing a blockage;
  - before checking, cleaning or working on the machine;

## PRECAUTIONS FOR CORDLESS GRASS TRIMMER

### WARNING

1. Exercise patience in all work with the tool. And dress properly to keep warm.
2. Plan all work ahead to prevent accidents.
3. Do not operate the tool at night or under bad weather conditions when visibility is poor. And do not operate the tool when it is raining or right after it has been raining. Working on slippery ground could lead to an accident if you lose your balance.

4. Inspect the nylon head before starting work. Do not use the tool if the nylon head is cracked, scarred or bent.

Make sure the nylon head is properly attached. A nylon head that falls apart or comes loose during operation could cause an accident.

5. Be sure to attach the guard before starting work. Operating the tool without this parts could lead to injury.
6. Be sure to attach the handle before starting work. Make sure it is not loose but properly attached before starting work. Hold the handle firmly during work and do not swing the tool around, but use the correct posture and maintain your balance.

Losing your balance during work could lead to an injury.

7. Take care when starting the motor. Place the tool on level ground. Do not operate the tool within 15 m of people or animals. Make sure that the nylon head does not come into contact with the ground or trees and plants. A careless start could lead to injury.

8. Do not secure the lock lever. Accidentally pulling back the lever could lead to unexpected injury.

9. Before leaving the tool, press the power switch to turn it off.

10. Operate the tool with care near electric cables, gas pipes and similar installations.

11. Look out for and remove empty cans, wire, stones or other obstacles before starting work. And do not work near tree roots or rocks.

Working in such areas could damage the nylon head or lead to injury.

12. Never touch the nylon head during operation. Also make sure it does not come into contact with your hair, clothes, etc.

13. In the following situations, turn off the motor and check that the nylon head has stopped rotating.  
To move to another work area.  
To remove rubbish or grass that has become stuck in the tool.  
To remove from the work area obstacles or the rubbish, grass and chips generated by trimming.  
To lay down the tool.  
Doing this with the nylon head still rotating could lead to unexpected accidents.
14. Do not use the tool within 15 m of another person.  
When you work with someone else, maintain a distance of more than 15 m.  
Flying chips could lead to unexpected accidents.  
When working on unstable surfaces like slopes, make sure that your co-worker is not exposed to any hazards.  
Use whistles or other means for calling the attention of your co-workers.
15. When grass and other objects become entangled in the nylon head, turn off the motor and make sure the nylon head has stopped rotating before removing them.  
Removing objects from the nylon head when it is still rotating will lead to injury.  
Continuing operation when foreign matter is stuck in the nylon head may lead to damage.
16. If the tool is operating poorly and produces strange noise or vibrations, turn off the motor immediately and ask your dealer to have it inspected and repaired.  
Continued use under these conditions could lead to injury or tool damage.
17. If you drop or bump the tool, inspect it carefully to check there is no damage, cracks or deformation.  
Using a tool that is damaged, cracked or deformed could result in injury.
18. Secure the tool during vehicle transport to ensure that it lies still.  
Failure to heed this warning may result in an accident.
19. This product contains a strong permanent magnet in the motor.  
Observe the following precautions regarding adhering of chips to the tool and the effect of the permanent magnet on electronic devices.
20. Do not use the product if the tool or the battery terminals (battery mount) are deformed.  
Installing the battery could cause a short circuit that could result in smoke emission or ignition.
21. Keep the tool's terminals (battery mount) free of swarf and dust.
  - Prior to use, make sure that swarf and dust have not collected in the area of the terminals.
  - During use, try to avoid swarf or dust on the tool from falling on the battery.
  - When suspending operation or after use, do not leave the tool in an area where it may be exposed to falling swarf or dust.  
Doing so could cause a short circuit that could result in smoke emission or ignition.

#### CAUTION

- Do not place the tool on a workbench or work area where metal chips are present.  
The chips may adhere to the tool, resulting in injury or malfunction.
- If chips have adhered to the tool, do not touch it. Remove the chips with a brush.  
Failure to do so may result in injury.
- If you use a pacemaker or other electronic medical device, do not operate or approach the tool.  
Operation of the electronic device may be affected.
- Do not use the tool in the vicinity of precision devices such as cell phones, magnetic cards or electronic memory media.  
Doing so may lead to misoperation, malfunction or loss of data.

#### CAUTION

1. Do not turn on the nylon head for cutting objects other than grass. Do not operate the tool in water puddles and make sure that soil does not come into contact with the nylon head.
2. The tool contains precision parts and should not be dropped, exposed to strong impact or water.  
The tool could be damaged or malfunction.
3. When the tool is to be stored after use or be transported, remove the nylon head.
4. Do not expose the tool to insecticide and other chemicals.  
Such chemicals could cause cracking and other damage.
5. Replace warning labels with new labels when they become difficult to recognize or illegible and when they start to peel.  
Ask your dealer to provide the warning labels.
6. Do not touch the motor immediately after use since it may be very hot.

#### PRECAUTIONS FOR BATTERY AND CHARGER (sold separately)

1. Always charge the battery at an ambient temperature of -10–40°C. A temperature of less than -10°C will result in over charging which is dangerous. The battery cannot be charged at a temperature greater than 40°C.  
The most suitable temperature for charging is that of 20–25°C.
2. Do not use the charger continuously.  
When one charging is completed, leave the charger for about 15 minutes before the next charging of battery.
3. Do not allow foreign matter to enter the hole for connecting the rechargeable battery.
4. Never disassemble the rechargeable battery or charger.
5. Never short-circuit the rechargeable battery.  
Short-circuiting the battery will cause a great electric current and overheat. It results in burn or damage to the battery.
6. Do not dispose of the battery in fire.  
If the battery is burnt, it may explode.
7. Using an exhausted battery will damage the charger.
8. Bring the battery to the shop from which it was purchased as soon as the post-charging battery life becomes too short for practical use. Do not dispose of the exhausted battery.
9. Do not insert objects into the air ventilation slots of the charger.  
Inserting metal objects or flammable into the charger air ventilation slots will result in an electrical shock hazard or damage to the charger.

## CAUTION ON LITHIUM-ION BATTERY

To extend the lifetime, the lithium-ion battery equips with the protection function to stop the output.

In the cases of 1 to 3 described below, when using this product, even if you are pulling the switch, the motor may stop. This is not the trouble but the result of protection function.

1. When the battery power remaining runs out, the motor stops.  
In such case, charge it up immediately.
2. If the tool is overloaded, the motor may stop. In this case, release the switch of tool and eliminate causes of overloading. After that, you can use it again.
3. If the battery is overheated under overload work, the battery power may stop.  
In this case, stop using the battery and let the battery cool. After that, you can use it again.

Furthermore, please heed the following warning and caution.

### WARNING

In order to prevent any battery leakage, heat generation, smoke emission, explosion and ignition beforehand, please be sure to heed the following precautions.

1. Make sure that swarf and dust do not collect on the battery.
  - During work make sure that swarf and dust do not fall on the battery.
  - Make sure that any swarf and dust falling on the power tool during work do not collect on the battery.
  - Do not store an unused battery in a location exposed to swarf and dust.
  - Before storing a battery, remove any swarf and dust that may adhere to it and do not store it together with metal parts (screws, nails, etc.).
2. Do not pierce battery with a sharp object such as a nail, strike with a hammer, step on, throw or subject the battery to severe physical shock.
3. Do not use an apparently damaged or deformed battery.
4. Do not use the battery in reverse polarity.
5. Do not connect directly to an electrical outlets or car cigarette lighter sockets.
6. Do not use the battery for a purpose other than those specified.
7. If the battery charging fails to complete even when a specified recharging time has elapsed, immediately stop further recharging.
8. Do not put or subject the battery to high temperatures or high pressure such as into a microwave oven, dryer, or high pressure container.
9. Keep away from fire immediately when leakage or foul odor are detected.
10. Do not use in a location where strong static electricity generates.
11. If there is battery leakage, foul odor, heat generated, discolored or deformed, or in any way appears abnormal during use, recharging or storage, immediately remove it from the equipment or battery charger, and stop use.
12. Do not immerse the battery or allow any fluids to flow inside. Conductive liquid ingress, such as water, can cause damage resulting in fire or explosion. Store your battery in a cool, dry place, away from combustible and flammable items. Corrosive gas atmospheres must be avoided.

### CAUTION

1. If liquid leaking from the battery gets into your eyes, do not rub your eyes and wash them well with fresh clean water such as tap water and contact a doctor immediately.  
If left untreated, the liquid may cause eye-problems.
2. If liquid leaks onto your skin or clothes, wash well with clean water such as tap water immediately.  
There is a possibility that this can cause skin irritation.

3. If you find rust, foul odor, overheating, discolor, deformation, and/or other irregularities when using the battery for the first time, do not use and return it to your supplier or vendor.

### WARNING

If an electrically conductive foreign object enters the terminals of the lithium ion battery, a short-circuit may occur resulting in the risk of fire. Please observe the following matters when storing the battery.

- Do not place electrically conductive cuttings, nails, steel wire, copper wire or other wire in the storage case.
- Either install the battery in the power tool or store by securely pressing into the battery cover until the ventilation holes are concealed to prevent short-circuits (See Fig. 2).

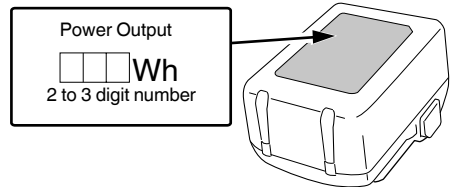
## REGARDING LITHIUM-ION BATTERY TRANSPORTATION

When transporting a lithium-ion battery, please observe the following precautions.

### WARNING

Notify the transporting company that a package contains a lithium-ion battery, inform the company of its power output and follow the instructions of the transportation company when arranging transport.

- Lithium-ion batteries that exceed a power output of 100 Wh are considered to be in the freight classification of Dangerous Goods and will require special application procedures.
- For transportation abroad, you must comply with international law and the rules and regulations of the destination country.



## DESCRIPTION OF NUMBERED ITEMS (Fig. 2 – Fig. 26)

①	Battery	⑱	Handle right	㉔	Button	㉔	Groove
②	Latch	⑲	Lever	㉕	Wear limit mark (2 marks)	㉕	Fold back the middle part
③	Battery cover	⑳	Handle left	㉖	Cutter holder	㉖	Hook on the reel
④	Terminals	㉑	Handle fixture (bike handlebars type)	㉗	Hex. bar wrench 4 mm	㉗	Direction to wind nylon cord
⑤	Ventilation holes	㉒	M5 × 25 hex. Socket bolts	㉘	25 mm diameter boss	㉘	Eyelet line guide
⑥	Push	㉓	Guard	㉙	Threaded fastener of the gear case	㉙	While holding the reel
⑦	Insert	㉔	M6 × 25 hex. Socket button bolts	㉚	Nylon head tightening direction (left rotation)	㉚	String the line through the eyelet line guide
⑧	Pull out	㉕	Cover bracket	㉛	Nylon line	㉛	Locking holes of cover (2 holes)
⑨	Battery level indicator switch	㉖	Gear case	㉜	Tap	㉜	Tabs of case (2 tabs)
⑩	Battery level indicator lamp	㉗	Knife	㉝	Extends in 30 mm increments	㉝	Power switch
⑪	Main pipe	㉘	Shoulder belt	㉞	Tap/release	㉞	Power lamp
⑫	Housing side	㉙	Quick-release belt	㉟	Appropriate length 90–110 mm	㉟	Mode switch
⑬	Loop handle	㉚	Hanger	㊱	Cover	㊱	Mode Indicator lamp
⑭	Handle fixture (loop handle type)	㉛	Bracket	㊲	Case	㊲	Lock lever
⑮	M6 × 43 bolts	㉜	Hook	㊳	Hook	㊳	Grip
⑯	M6 nuts	㉝	Quick-release bracket	㊴	Press tabs (2 areas)		
⑰	Handle location label	㉞	Nylon head	㊵	Reel		

## SPECIFICATIONS

Model	CG36DB	CG36DB(L)
Voltage	36 V	
Pole type	Straight type	
Cutting capacity diameter	310 mm	
Rotation direction	Counterclockwise as seen from above	
No-load speed	6500 /min (Power) 5500 /min (Normal) 4000 /min (Eco)	
Operating time under no load* (When supplied rechargeable battery is fully charged)	BSL36B18X 39 min (Power) 70 min (Normal) 122 min (Eco)	
Battery available for this tool** (sold separately)	Multi volt battery	
Weight (with nylon head, rechargeable battery, shoulder belt and guard)	4.5 kg (BSL36A18X) 4.8 kg (BSL36B18X)	4.3 kg (BSL36A18X) 4.6 kg (BSL36B18X)

\* The data in the above table is provided only as an example. Since ambient temperature, rechargeable battery characteristics, etc. can vary widely the above should only be used as a rough guideline.

Conditions: Outer diameter of nylon head 310 mm, mode switch set to Power, Normal or Eco. (lever left ON all the time)

\*\* AC/DC Adapter (ET36A) cannot be used. Existing batteries (BSL3660/3626X/3626/3625/3620, BSL18.... and BSL14.... series) cannot be used with this tool.

## STANDARD ACCESSORIES

In addition to the main unit (1 unit), the package contains the accessories listed on page 18.

Standard accessories are subject to change without notice.

## OPTIONAL ACCESSORIES (sold separately) (Page 19)

Optional accessories are subject to change without notice.

## APPLICATIONS

Trimming, scaling and mowing of weed.

## BATTERY REMOVAL/INSTALLATION

### 1. Battery removal

Hold the housing tightly and push the battery latches to remove the battery (see **Fig. 3**).

### CAUTION

Never short-circuit the battery.

### 2. Battery installation

Insert the battery while observing its polarities (see **Fig. 3**).

## CHARGING

Battery and battery charger are not included with this product.

For rechargeable batteries, please charge in according to the handling instructions of the charger which you are using.

## REMAINING BATTERY INDICATOR

You can check the battery's remaining capacity by pressing the remaining battery indicator switch to light the indicator lamp. (**Fig. 4, Table 1**)




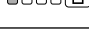
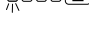
The indicator will shut off approximately 3 seconds after the remaining battery indicator switch is pressed.



It is best to use the remaining battery indicator as a guide since there are slight differences such as ambient temperature and the condition of the battery.

Also, the remaining battery indicator may vary from those equipped to a tool or charger.

(Battery is not included, sold separately)

**Table 1**

State of lamp	Battery Remaining Power
	Lights ; The battery remaining power is over 75%
	Lights ; The battery remaining power is 50%–75%.
	Lights ; The battery remaining power is 25%–50%.
	Lights ; The battery remaining power is less than 25%
	Blinks ; The battery remaining power is nearly empty. Recharge the battery soonest possible.

	Blinks ; Output suspended due to high temperature. Remove the battery from the tool and allow it to fully cool down.
	Blinks ; Output suspended due to failure or malfunction. The problem may be the battery so please contact your dealer.

As the remaining battery indicator shows somewhat differently depending on ambient temperature and battery characteristics, read it as a reference.

### NOTE

Do not give a strong shock to the switch panel or break it. It may lead to a trouble.

## PRIOR TO OPERATION

### CAUTION

Pull out battery before doing any assembly.

### 1. Installing the bike handlebars (**Fig. 6**) (CG36DB only)

(1) Using the 4 mm hex wrench that is included, remove the four bolts that have been temporarily secured to the handle fixture.

(2) Attach the handle right that has the lever and the handle left, and then carefully secure the handle fixture using the four bolts.

To ensure the parts are attached securely, tighten the bolts at least twice (repeating the following sequence). Gradually increase the tightening torque each time to ensure the bolts are tightened uniformly.

With four bolts: **1** → **2** → **3** → **4** → **1** → **2** → **3** → **4** ...

### NOTE

Secure the handle left and handle right in a location that provides a good grip.

### CAUTION

Install the handle left and handle right properly and securely as instructed in the handling instructions.

If not attached properly or securely, it may come off and cause injury.

### 2. Installing the loop handle (**Fig. 5**) (CG36DB(L) only)

(1) Remove the M6 × 43 bolts (2 pcs.).

(2) Install the loop handle on the main pipe so that it leans against the housing.

(3) Place the handle fixture at the lower end of the main pipe and secure it firmly using M6 × 43 bolts (2 pcs.) and M6 nuts (2 pcs.).

To ensure the parts are attached securely, tighten the bolts at least twice (repeating the following sequence). Gradually increase the tightening torque each time to ensure the bolts are tightened uniformly.

With two bolts: **1** → **2** → **1** → **2** ...

### NOTE

If your unit has handle location label on main pipe, follow the illustration. (**Fig. 5**)

### CAUTION

Install the loop handle properly and securely as instructed in the handling instructions.

If not attached properly or securely, it may come off and cause injury.

### 3. Installing guard (**Fig. 7**)

#### WARNING

Be sure to install the guard in its designated location.

Failure to heed this warning may result in injury from flying stones.

### NOTE

Use the supplied hex. bar wrench 4 mm for installation.

(1) Align the two holes in the cover bracket and the guard and insert two M6 × 25 hex. socket button bolts. (The cover bracket is installed in the gear case.)

- (2) Use the supplied hex. bar wrench 4 mm to alternately tighten the two M6 × 25 hex. socket button bolts until they are properly tightened.

To ensure the parts are attached securely, tighten the bolts at least twice (repeating the following sequence). Gradually increase the tightening torque each time to ensure the bolts are tightened uniformly.

With two bolts: **1** → **2** → **1** → **2** ....

#### CAUTION

- Take care to avoid cutting yourself on the knife inside the guard.
- Install the guard properly and securely as instructed in the handling instructions.  
If not attached properly or securely, they may come off and cause injury.
- Check before use to confirm that the guard is neither damaged nor deformed.

#### 4. Installing the shoulder belt

##### WARNING

- Be sure to attach the shoulder belt so that the grass trimmer can be carried correctly.
- If you get the feeling the tool is not operating normally, turn off the motor immediately, remove the quick-release bracket of the shoulder belt and remove the tool.

##### CAUTION

- If you do not support the tool when you pull the quick-release belt, it may fall causing injury or damage.  
Hold the main pipe with one hand while you pull with the other hand.
  - Make sure the quick-release function operates normally before you start working.
  - Before attaching, check to confirm that the belt is not cut, frayed, or damaged.
  - Check to confirm that the hook and hanger are neither deformed nor damaged.
  - Once attached, press down on the main unit to confirm that the hook does not detach easily and that the shoulder belt is not loose.
  - Check to confirm that the quick release function operates as it should.
- (1) Place the shoulder belt on the shoulder as shown in **Fig. 8** and engage it with the hanger on the tool. Adjust the shoulder belt to suitable length.
  - (2) To remove the tool from the shoulder belt, support the tool by holding the main pipe with one hand and use the other hand to pull the quick-release belt as shown in **Fig. 9** to free it from the bracket.
  - (3) To strap on the tool, insert the bracket in the hook and insert the quick-release bracket over the hook and into the wide opening of the bracket. (**Fig. 10**)  
Gently pull the shoulder belt to make sure that it is properly attached.

## NYLON HEAD

### Installation of semi-auto nylon head

#### 1. Function

Automatically feeds more nylon cutting line when it is tapped.

#### Specifications

Code No.	Type of attaching screw	Direction of rotation	Size of attaching screw
335234	Female screw	Counterclockwise	M10× P1.25-LH

Applicable nylon cord

Cord diameter: **Fig. 11-a**

Length: 4 m

#### CAUTION

- The case must be securely attached to the cover.
- Check the cover, case and other components for cracks or other damage.
- Check the case and button for wear.  
If the wear limit mark on the case is no longer visible or there is a hole in the bottom of the button, change the new parts immediately. (**Fig. 11-b**)
- The nylon head must be securely mounted to the threaded fastener of the gear case.
- For outstanding performance and reliability, always use HiKOKI nylon cutting line. Never use wire or other materials that could become a dangerous projectile.
- If the nylon head does not feed cutting line properly, check that the nylon line and all components are properly installed. Contact your HiKOKI dealer if you need assistance.

#### 2. Installation (**Fig. 12**)

- (1) Insert into the gear case so that the 25 mm diameter boss on the cutter holder engages with the nylon head. Make sure the protrusions and indentations on the spindle and hole engage.
- (2) Lock the spindle in place to keep it from rotating when mounting the nylon head. To do so, insert the 4 mm hex bar wrench into the gear case hole and one of the four cutter holder holes.
- (3) Screw the nylon head directly to the threaded fastener of the gear case.  
The mounting nut of nylon head is left-hand-threaded. Turn clockwise to loosen/ counterclockwise to tighten.

#### CAUTION

Install the nylon head properly and securely as instructed in the handling instructions.

If not attached properly or securely, it may come off and cause injury.

#### 3. Adjustment of line length

Rotate and tap the nylon head on the ground. Nylon line is drawn out abt. 30 mm by one tapping. (**Fig. 13**)

Also, you can extend nylon line with hands. This time the motor must be completely stopped.

Confirm the line extends in 30 mm increments by "tapping" and "releasing" the bottom button while pulling the line ends of the nylon head. (**Fig. 14**)

- Appropriate Length of Nylon Line

The appropriate length of the line when the tool is in use is 90–110 mm. Extend the line to the appropriate length.

#### 4. Nylon line replacement

- (1) Prepare 4 m of genuine nylon line in **Fig. 11-a**. (Code No. 335235)
- (2) Press the opposing tabs, and then remove the cover from the case. (**Fig. 15**)
- (3) Remove the reel from the case. (**Fig. 16**)
  - If there is nylon line remaining, hook the line in the grooves, and then remove the reel.
  - If the nylon line does not extend when there is enough nylon line remaining, or when replacing the nylon line, wind the nylon line using the following procedure.
- (4) Release about 150 mm of the nylon cord from both ends, fold the middle part and attach to the hook on the reel. Next, wind the cord on the reel in the direction shown by the arrow, being careful not to crisscross it (**Fig. 17, 18**).

#### NOTE

Do not cross the nylon line when securing the line in the groove. (**Fig. 18**)

- (5) Leave about 100 mm–150 mm nylon cord unwound, hook and secure the line in the groove. (**Fig. 19**)
- (6) Align the position of the stopper and eyelet line guide, and then insert the button through the case. Release the line from the stopper while holding the reel lightly, and then string the line through the eyelet line guide. (**Fig. 20**)
- (7) Press and snap the tabs of the case in the locking holes of the cover. (**Fig. 21**)

#### WARNING

Check to make sure the tabs are firmly snapped into the locking holes.

Operating the tool while the parts are not firmly snapped together may result in accidents or injury from flying part.

- (8) Pull the line taught so there is no slack, and then cut the line to an extended length of 90 mm–110 mm with scissors. (**Fig. 22**)

## ABOUT POWER LAMP

The power lamp indicates various statuses for the tool. (**Fig. 23**)

**Table 2** shows the various statuses indicated by the power lamp. (see page 16, “OPERATIONAL CAUTIONS”)

**Table 2**

State of lamp	Status of Tool
Off	Power OFF
Red	Power ON
Blinking red	The lever is being pressed while the overload protection circuit of the tool is operating.

## OPERATION

#### Trimming grass

#### WARNING

- Do not operate the tool at night or under bad weather conditions when visibility is poor.
- Do not operate the tool when it is raining or right after it has been raining.
- Wear proper footwear to prevent slipping that could cause you to lose your balance and fall.
- Do not use the tool on steep slopes. When trimming grass on slopes that are not so steep, trim by moving towards the ridge.
- Take care not to move the nylon head too close to your feet.
- Do not raise the nylon head above your knee during cutting.

- Do not use the tool where the nylon head may come into contact with stones, tree and other obstacles.
- A nylon head can injure while it continues to spin after the motor is stopped. When the unit is turned off, make sure the nylon head has stopped before the unit is set down.
- Do not use the tool within 15 m of another person. When you work with someone else, maintain a distance of more than 15 m.

#### 1. Insert the battery while observing its polarities.

#### 2. Turn on the tool. (**Fig. 23-a**)

- Press the power switch on the housing, the power goes on and the power lamp on the housing lights red.
- Pressing the power switch a second time turns the power off and the red lamp on the housing goes off.

#### [Auto power off]

When the power is turned on but the lever is not used for one minute, the tool is automatically turned off. To turn the tool on again, press the power switch a second time.

#### WARNING

Never leave the tool with the power on. This could result in an accident.

#### 3. Lever operation and brake (**Fig. 24**)

To start rotation of the nylon head, with the power turned on, pull the lever while pressing the lock lever.

When you release the lever, the brake engages in 1–3 seconds, stopping rotation of the nylon head.

Make sure that the brake operates normally before using the tool.

#### 4. Mode switch (**Fig. 23-b**)

The tool is equipped with three modes:

“Power Mode” “Normal Mode” “Eco Mode”.

- (1) Power Mode
- (2) Normal Mode
- (3) Eco Mode

#### ● Work Capacity on a Full Charge

The following is a rough estimate of the amount of work provided by the grass trimmer when on a full charge. (The amount of work varies somewhat due to ambient temperature and characteristics of the battery)

Time in continuous operation when switch fully depressed in each mode

(Under no load)

Mode	Battery	BSL36B18X
	Power	39 min
	Normal	70 min
	Eco	122 min

#### 5. Trimming grass

- Grip the handle, press the lock lever and pull the lever to start cutting head rotation. (**Fig. 24 a-1, a-2**)
- Release the lever when you finish trimming and stop the motor.

- Take a posture that makes it easy to move.

#### [Grass trimming techniques]

Do not swing the pipe, but use the hips to move the nylon head horizontally from left to right in an arc while going forward and use the right side of the nylon head for cutting grass. (**Fig. 25**)

#### 6. Carrying the tool

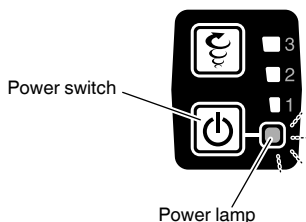
#### CAUTION

- Remove the storage battery. (**Fig. 3**)
- Carry the tool holding with hands.

## OPERATIONAL CAUTIONS

This tool incorporates a function to safeguard the electronic components that control the main unit. If an overload occurs during mowing—for example, if the nylon head locks up or becomes clogged with vegetation—the function will activate to stop the motor. If this happens, the power lamp will flash. Check the lamp status and take appropriate corrective action.

You can resume use after taking the following corrective action. Take steps to reduce the load imposed on the motor—for example, by reducing the cutting depth. Before clearing vegetation from the nylon head, turn off the power and remove the battery from the tool main unit.



Power lamp flashing status	Cause	Corrective action
0.5 s on/0.5 s off ■ ■ ■ ■ ■ (slow flashing)	The internal temperature exceeded the preset limit. The tool has stopped. (The motor turns off. The power will shut down automatically after one minute.) [Temperature protection function]	Turn off the power and wait for the device to cool. You can resume use once the device temperature has fallen.
0.1 s on/0.1 s off ■ ■ ■ ■ ■ ■ ■ ■ ■ ■ (rapid flashing)	The tool attachment load exceeded the preset limit. The tool has stopped. (The motor turns off and the lamp flashes for 10 seconds.) [Overload protection function]	Turn off the power and remove the battery. Resolve the cause of the overload. You can resume use after resolving the overload cause.

### NOTE

If the power lamp continues to flash even after the corrective action has been taken, the tool may be damaged or defective. Please contact the retail outlet where you purchased the tool for repairs.

## MAINTENANCE AND INSPECTION

### CAUTION

Pull out battery before doing any inspection or maintenance.

#### 1. Checking the condition of the nylon head

The nylon head should be checked regularly. If worn or broken nylon head can slip or decrease the efficiency of the motor and burn it out.

Replace worn nylon head with new ones.

### CAUTION

If you use a nylon head of which point is worn or broken, it will be dangerous. So replace it with a new one.

#### 2. Check the Screws

Loose screws are dangerous. Regularly inspect them and make sure they are tight.

### CAUTION

Using this power tool with loosened screws is extremely dangerous.

#### 3. Inspection of terminals (tool and battery)

Check to make sure that swarf and dust have not collected on the terminals.

On occasion check prior, during and after operation.

### CAUTION

Remove any swarf or dust which may have collected on the terminals.

Failure to do so may result in malfunction.

#### 4. Cleaning of the outside

When the grass trimmer is stained, wipe with a soft dry cloth or a cloth moistened with soapy water. Do not use chloric solvents, gasoline or paint thinner, as they melt plastics.

#### 5. Gear case (Fig. 26)

Check gear case or angle gear for grease level about every 50 hours of operation by removing the grease filler plug on the side of gear case.

If no grease can be seen on the flanks of the gears, fill the gear case with quality lithium based multipurpose grease up to 3/4. Do not completely fill the gear case.

### CAUTION

- Make sure to remove any dirt or grit when attaching the plug to its original position.
- Before attempting inspection or maintenance of the gear case, make sure the case has cooled.

#### 6. Storage

Store grass trimmer in a place in which the temperature is less than 40°C and out of reach of children.

### NOTE

Storing Lithium-ion Batteries

Make sure the lithium-ion batteries have been fully charged before storing them.

Prolonged storage (3 months or more) of batteries with a low charge may result in performance deterioration, significantly reducing battery usage time or rendering the batteries incapable of holding a charge.

However, significantly reduced battery usage time may be recovered by repeatedly charging and using the batteries two to five times.

If the battery usage time is extremely short despite repeated charging and use, consider the batteries dead and purchase new batteries.

### CAUTION

In the operation and maintenance of power tools, the safety regulations and standards prescribed in each country must be observed.



**Important notice on the batteries for the HiKOKI cordless power tools**

Please always use one of our designated genuine batteries. We cannot guarantee the safety and performance of our cordless power tool when used with batteries other than these designated by us, or when the battery is disassembled and modified (such as disassembly and replacement of cells or other internal parts).

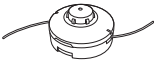


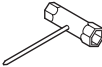


**NOTE**

Due to HiKOKI's continuing program of research and development, the specifications herein are subject to change without prior notice.

**TROUBLESHOOTING**

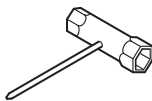
Use the inspections in the table below if the tool does not operate normally. If this does not remedy the problem, consult your dealer or the HiKOKI Authorized Service Center.

Symptom	Possible cause	Remedy
The tool does not function.	The battery is dead.	Recharge the battery.
	The battery is not fully inserted.	Pull out the battery and remove any debris from the battery compartment. Use cotton swabs or similar materials to remove dirt or water from the battery terminals. Insert the battery firmly until it clicks into place.
	The battery is overheated.	Stop using the tool. Remove the battery and allow the battery to cool in a shaded, well-ventilated area.
	The power is not on.	Press the power switch on the housing. The tool features an auto power off function that turns the power off automatically after one minute if the operator does not operate the lever.
	The operator attempted to pull the lever without pressing the lock lever.	The tool will not allow operation of the lever unless the operator presses the lock lever to release the safety lock mechanism. Grasp the handle and press the lock lever while pulling the lever.
	Excessive vegetation entangled in the guard and nylon head overloaded the motor.	If overloaded, the motor may cut out to protect the tool and battery. Turn off the power, remove the battery, and clear the cause of the overload. The tool can be used again after turning the power back on.
The tool starts, then stops soon.	The battery is low.	Recharge the battery.
	The battery is overheated.	Stop using the tool. Remove the battery and allow the battery to cool in a shaded, well-ventilated area.
	The tool is overloaded.	Reduce the cutting depth to reduce the load.
The speed cannot be changed.	The battery is low.	Recharge the battery.
Vibration is excessive.	The nylon head is not correctly attached.	Reattach the nylon head.
	The nylon head is cracked, broken, or deformed.	Replace the nylon head.
	The handle is not securely attached to the main pipe.	Attach securely.
	The guard is not securely attached to the main pipe.	Attach securely.
The brake takes more than three seconds to take effect, even after you release the lever.	There may be a problem with the product.	Contact the store where you purchased the tool or your nearest HiKOKI Authorized Service Center.
The battery cannot be attached.	The battery is not the type specified.	Use only MULTI VOLT batteries.
The nylon head will not turn.	The nylon head mount is not fitted correctly.	Reattach the nylon head mount.

	CG36DB
	(NN)
	1
	1
	1
	1
	1
	1



6684813



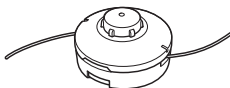
6684764



330787



377266



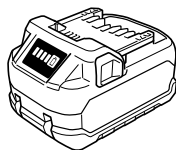
335234



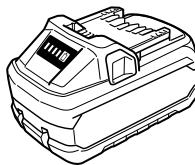
335235



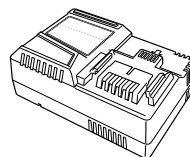
875769



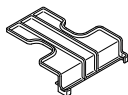
BSL36A18X



BSL36B18X



UC18YSL3



329897

# Koki Holdings Co., Ltd.

Shinagawa Intercity Tower A, 15-1, Konan 2-chome,  
Minato-ku, Tokyo, Japan