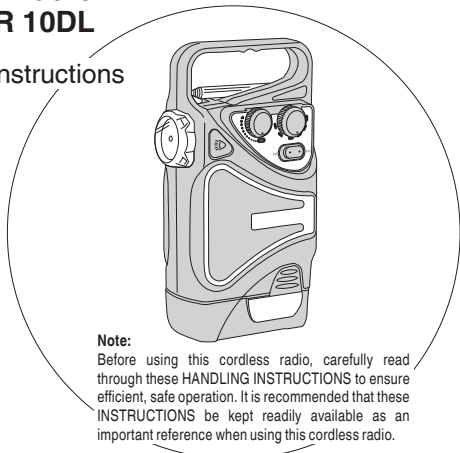


Cordless Radio Model UR 10DL

Handling instructions



Note:

Before using this cordless radio, carefully read through these HANDLING INSTRUCTIONS to ensure efficient, safe operation. It is recommended that these INSTRUCTIONS be kept readily available as an important reference when using this cordless radio.

Koki Holdings Co., Ltd.

Shinagawa Intercity Tower A, 15-1, Konan 2-chome,
Minato-ku, Tokyo, Japan

806
Code No. C99185311 A
Printed in China

CORDLESS RADIO SAFETY WARNINGS

⚠ WARNING

Read all safety warnings and all instructions.

Failure to follow the warnings and instructions may result in electric shock, fire and/or serious injury.

Save all warnings and instructions for future reference.

1. Use only the specified battery.

- Do not use a modified battery (including a battery that has been disassembled and the cell or other internal parts changed). Doing so may result in malfunction or cause smoke or flames to be emitted.

2. When not in use, remove the battery from the radio.

- Failure to do so may result in electric shock or fire.

3. Do not use the radio in the bathroom or shower.

- Do not use the radio in wet or damp places or in the rain.

Doing so may result in electric shock, emission of smoke or malfunction.

4. Do not touch the antenna during thunderstorms.

- Doing so may result in electric shock.

5. Do not subject the radio to strong impact, disassemble or otherwise modify the device.

- Doing so may result in electric shock or fire. Inspections and repairs should be performed by the store where purchased or by a HiKOKI power tool service center.

6. Do not let any foreign objects or water get inside the radio body.

- If any metal or flammable object or water gets inside the radio body, it may lead to electric shock or fire.

7. Do not place the radio on an unstable surface or in a high place.

- The radio may fall and cause injury or malfunction.

8. Do not leave the radio where it will be exposed to high temperature (50°C or over) such as inside a sun-heated vehicle.

- Doing so may result in malfunction.

9. Fold away the antenna when carrying the radio.

Tighten the screw at the mounting part when it has come loose.

- Failure to do so may result in injury.

10. Carry the radio carefully and do not wave it around.

- The battery may fall out, causing damage or injury.

11. Do not look directly into the LED light when it is on.

- Doing so may damage your eyes.

12. Keep the radio away from gasoline or thinner.

- Such substances may cause deformation or melt the plastic components.

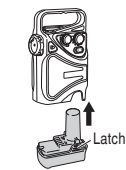
SPECIFICATIONS

Model	UR10DL	
Frequency band	FM: 87.5 to 108 MHz AM: 522 to 1620 KHz	
Antenna	FM: Rod antenna 280 mm AM: Ferrite bar antenna (built-in) 50 mm	
Speaker	40 mm (8 Ω) × 1	
Rechargeable battery (sold separately)	BCL1015: Li-ion DC 10.8 V / 12 V Peak (1.5 Ah 3 cells)	
Continuous operating time*	When using radio	Approx. 20 hours
	When using flashlight	Approx. 50 hours
Maximum exterior dimensions	146.5 mm × 95 mm × 48.5 mm (without battery)	
Weight	0.2 kg (without battery)	

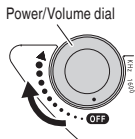
* The continuous operating time varies depending on the conditions of use. The radio operating time is the number of hours with the radio at maximum volume.

LISTENING TO THE RADIO

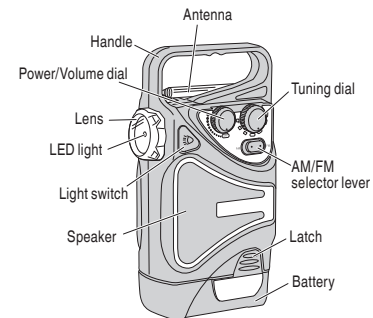
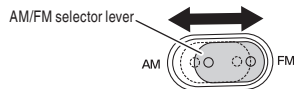
1. Insert the battery
Insert the battery in the direction of the arrow until it clicks.
To remove the battery, press the latch and remove the battery.



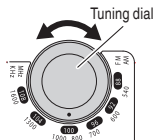
2. Turn on the power
Rotate the power/volume dial clockwise to turn on the power.



3. Select the mode
Slide the AM/FM selector lever to select AM or FM mode.



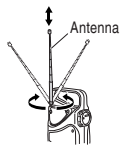
4. Select a station
Rotate the tuning dial to select the desired station.



FOR BETTER RECEPTION

FM

Adjust the length, direction and angle of the antenna to ensure the best reception.



AM

The radio has a built-in antenna. Turn the radio around to find the direction with the best reception.



IF THERE ARE SMOKE OR ODORS

WARNING

If the radio emits smoke or an abnormal smell, rotate the power/volume dial to OFF and remove the battery. Continued use of the radio may result in fire or electric shock.

Contact the shop where the radio was purchased.

Location

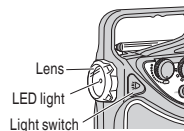
- Reception may be poor when the radio is used inside a building or vehicle.
Place the radio near the window to ensure better reception.
- Noise may occur if the radio is placed near a device that generates noise.
Move the radio away from the source of the noise.
- Noise may occur if a mobile phone is placed near the radio.
A mobile phone emits radio waves both during calls and in standby mode.
If possible, keep mobile phones away from the radio.

TURNING ON THE LED LIGHT

- The LED light turns on and off each time the light switch is pressed.
- The LED light can be turned on while listening to the radio.

NOTE

If the lens is dirty, wipe it gently with a soft cloth.



MAINTENANCE AND INSPECTION

WARNING

When not in use or during inspection and maintenance, be sure to remove the battery.

● Cleaning on the outside

When the radio is stained, wipe with a soft dry cloth or a cloth moistened with soapy water.
Do not use solvents containing chlorine, gasoline or paint thinner as they may melt plastic.

● Storing the Radio

- After use, turn off the power and store the radio.
- If the radio will not be used for a long period, remove the battery.
- Do not store the radio in the following places.
 - Within reach of or easily accessible to children
 - In humid or dusty places
 - In high temperature such as inside a car or exposed to direct sunlight
 - Where the temperature changes drastically
 - Where it is exposed to smoke or steam such as near a cooking appliance or humidifier

● Service parts list

CAUTION

Repair, modification and inspection of HiKOKI Power Tools must be carried out by a HiKOKI Authorized Service Center. This Parts List will be helpful if presented with the tool to the HiKOKI Authorized Service Center when requesting repair or other maintenance.

In the operation and maintenance of power tools, the safety regulations and standards prescribed in each country must be observed.

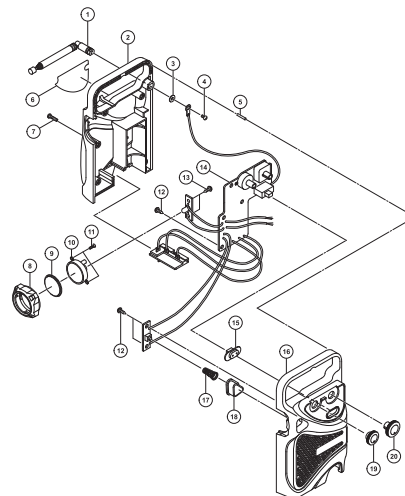
MODIFICATIONS

HiKOKI Power Tools are constantly being improved and modified to incorporate the latest technological advancements.

Accordingly, some parts may be changed without prior notice.

NOTE

Due to HiKOKI's continuing program of research and development, the specifications herein are subject to change without prior notice.



Item No.	Part Name	Q'TY
1	ROD ANTENNA	1
2	HOUSING (B)	1
3	WASHER	1
4	SCREW	1
5	ROLL PIN	2
6	NAME PLATE	1
7	SCREW	6
8	LIGHT COVER	1
9	LENS	1
10	REFLECTOR	1
11	SCREW	2
12	SCREW	4
13	SCREW	2
14	PCBA	1
15	BAND SWITCH	1
16	HOUSING (A) ASS'Y	1
17	SPRING	1
18	LIGHT SWITCH	1
19	VOLUME DIAL	1
20	TUNING DIAL	1