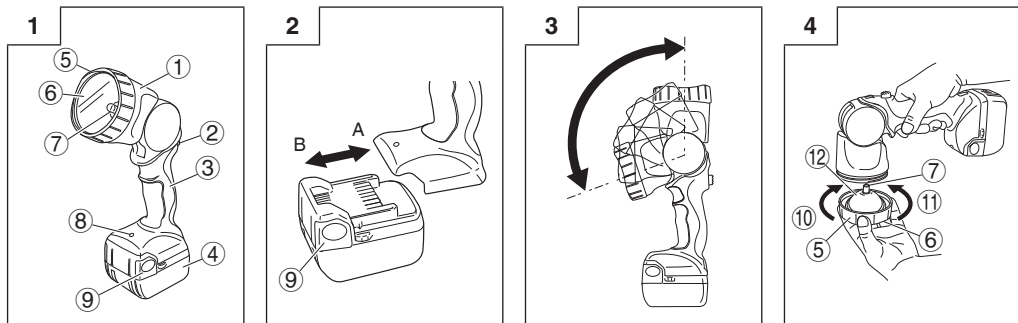


HIKOKI



English			中国				
①	Head	⑦	Bulb	①	头部	⑦	灯泡
②	Switch	⑧	Remaining battery indicator lamp	②	开关	⑧	剩余电池电量指示灯
③	Handle	⑨	Latch	③	手柄	⑨	止动销
④	Battery	⑩	Remove	④	电池	⑩	拆卸
⑤	Front cover	⑪	Attach	⑤	前盖	⑪	安装
⑥	Lens	⑫	Reflector	⑥	镜头	⑫	反光片

English

CORDLESS TORCHLIGHT UB18DAL INSTRUCTION MANUAL

CAUTION

- Do not look at the light directly.
- Do not open the front cover immediately after using the torchlight because the bulb is very hot.
- Be sure to turn the switch OFF before replacing the bulb or when not using.
- Do not expose the torchlight to rain.
- Do not shock or disassemble the torchlight.
- Do not allow the torchlight to contact gasoline, thinner etc.
- Do not leave the torchlight in a car or the like that tends to be exposed to be searching heat of the sun (above 60°C). Otherwise, troubles can result.

SPECIFICATIONS

Battery	BSL1430 (sold separately)
Bulb	18 V, 0.6 A
Operating time	Approx. 4.5 hours (Using full charged BSL1430 battery)
Dimensions (without battery)	85 mm (diameter) × 274 mm (length)
Weight (without battery)	0.35 kg

HOW TO USE

- Battery insert/removal**
Insert the battery in direction A until it clicks. To remove, extract it in direction B while holding down the latch. (Fig. 2)
- Head angle adjustment**
The angle of the head can be adjusted according to use.
The head rotates from 0° to 110° and can be fixed in 5 steps. (Fig. 3)
- Bulb replacement**
Turn the torchlight so that the lens is facing downward, taking care not to drop the lens, and remove the front cover, lens and reflector. (Fig. 4)

CAUTION:

If the battery indicator lamp fails to light or goes off when the torchlight is turned on, the battery power is low.

Replace or recharge the battery. Failure to do so may result in the light suddenly going off due to the over discharge protection circuit. It is advisable to occasionally check the battery indicator lamp status during use.

注意

- 请勿直接看着闪光灯。
- 使用手电筒后请勿立即打开前盖, 因为灯泡很热。
- 更换灯泡前或不使用时请务必关闭开关。
- 请勿将手电筒暴露于雨中。
- 请勿震动或拆卸手电筒。
- 请勿让手电筒接触汽油、稀释剂等。
- 请勿将手电筒留在车内等易受阳光照射而发热的地方(60°C以上), 否则会引起故障。

规格

电池	BSL1430 (另售)
灯泡	18V, 0.6A
工作时间	约4.5小时 (使用充满电的BSL1430电池)
尺寸 (电池除外)	85mm (直径) × 274mm (长度)
重量 (电池除外)	0.35 kg

使用方法

1. 装卸电池
沿着方向A插入电池直至发出咔嚓的响声。要拆下时, 请边压下止动销边沿着方向B取出电池。(图 2)
2. 头部角度调节
能根据需要调节头部角度。头部能从0度转到110度, 并能以五档固定。(图 3)
3. 更换灯泡
旋转手电筒使镜头面朝下, 旋转时注意不要让镜头掉落, 然后取下前盖, 镜头和反光片。(图 4)

注意:

打开手电筒时如果电池指示灯不点亮或熄灭, 说明电池电量不足。请更换电池或给电池充电。否则可能会因过放电保护电路的作用而导致闪光灯突然熄灭。推荐使用时经常查看电池指示灯的状态。

服务中心

工机商业(中国)有限公司
上海市闵行区浦江工业园区三鲁路3585号7幢3楼

制造商

高壹工机亚洲有限公司
香港新界荃湾青山道388号
中国染厂大厦11楼A-D室