

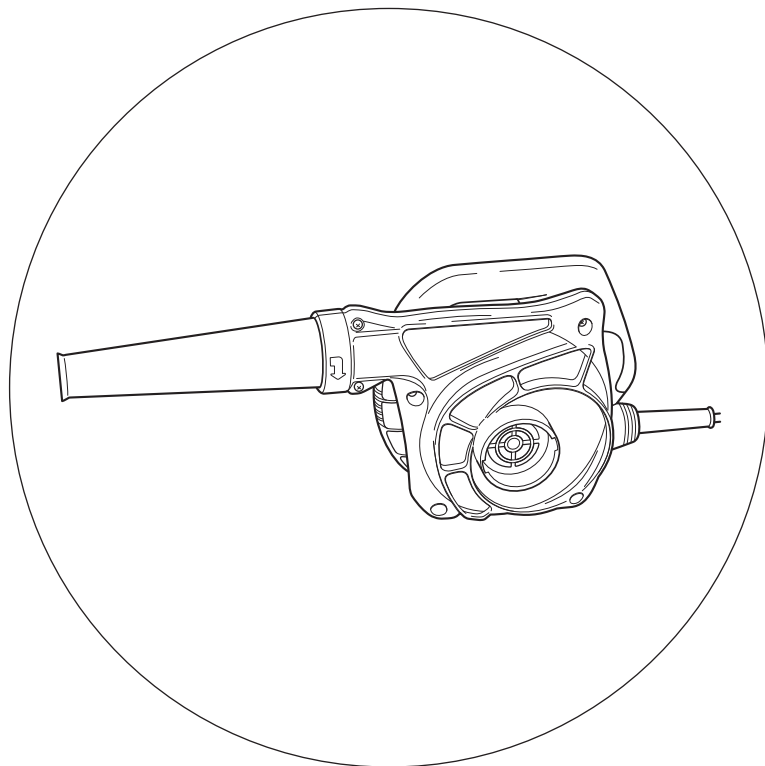
HiKOKI

吹风机

Blower

中文
English

RB 40SA



保留备用

Keep for future reference



使用说明书

Handling instructions



目次

电动工具通用安全警告.....	2	作业之前.....	5
吹风机使用注意事项.....	4	喷嘴与集尘袋的安装与拆卸.....	6
符号.....	5	吹风机的使用方法.....	6
规格.....	5	维护和检查.....	6
标准附件.....	5	维修零部件一览表.....	8
用途.....	5		

电动工具通用安全警告

⚠ 警告！

阅读所有警告和所有说明。

不遵照以下警告和说明会导致电击、着火和 / 或严重伤害。

保存所有警告和说明书以备查阅。

在所有下列的警告中术语“电动工具”指市电驱动(有线)电动工具或电池驱动(无线)电动工具。

1) 工作场地的安全

- a) 保持工作场地清洁和明亮。
混乱和黑暗的场地会引发事故。
- b) 不要在易爆环境，如有易燃液体、气体或粉尘的环境下操作电动工具。
电动工具产生的火花会点燃粉尘或气体。
- c) 让儿童和旁观者离开后操作电动工具。
注意力不集中会使操作者失去对工具的控制。

2) 电气安全

- a) 电动工具插头必须与插座相配。绝不能以任何方式改装插头。需接地的电动工具不能使用任何转换插头。
未经改装的插头和相配的插座将减少电击危险。
- b) 避免人体接触接地表面，如管道、散热片和冰箱。
如果你身体接地会增加电击危险。
- c) 不得将电动工具暴露在雨中或潮湿环境中。
水进入电动工具将增加电击危险。
- d) 不得滥用电线。绝不能用电线搬运、拉动电动工具或拔出其插头。使电线远离热源、油、锐边或运动部件。
受损或缠绕的软线会增加电击危险。
- e) 当在户外使用电动工具时，使用适合户外使用的外接软线。
适合户外使用的软线将减少电击危险。

- f) 如果在潮湿环境下操作电动工具是不可避免的，应使用剩余电流动作保护器（RCD）。
使用RCD可减小电击危险。

3) 人身安全

- a) 保持警觉，当操作电动工具时关注所从事的操作并保持清醒。当你感到疲倦，或在有药物、酒精或治疗反应时，不要操作电动工具。
在操作电动工具时瞬间的疏忽会导致严重人身伤害。
- b) 使用个人防护装置。始终佩戴护目镜。
安全装置，诸如适当条件下使用防尘面具、防滑安全鞋、安全帽、听力防护等装置能减少人身伤害。
- c) 防止意外起动。确保开关在连接电源和 / 或电池盒、拿起或搬运工具时处于关断位置。
手指放在已接通电源的开关上或开关处于接通时插入插头可能会导致危险。
- d) 在电动工具接通之前，拿掉所有调节钥匙或扳手。
遗留在电动工具旋转零件上的扳手或钥匙会导致人身伤害。
- e) 手不要伸展得太长。时刻注意立足点和身体平衡。
这样在意外情况下能很好地控制电动工具。
- f) 着装适当。不要穿宽松衣服或佩戴饰品。让衣服、手套和头发远离运动部件。
宽松衣服、佩饰或长发可能会卷入运动部件中。
- g) 如果提供了与排屑、集尘设备连接用的装置，要确保它们连接完好且使用得当。
使用这些装置可减少尘屑引起的危险。

4) 电动工具使用和注意事项

- a) 不要滥用电动工具，根据用途使用适当的电动工具。
选用适当设计的电动工具会使你工作更有效、更安全。
- b) 如果开关不能接通或关断工具电源，则不能使用该电动工具。
不能用开关来控制的电动工具是危险的且必须进行修理。
- c) 在进行任何调节、更换附件或贮存电动工具之前，必须从电源上拔掉插头和 / 或使电池盒与工具脱离。
这种防护性措施将减少工具意外起动的危险。
- d) 将闲置不用的电动工具贮存在儿童所及范围之外，并且不要让不熟悉电动工具或对这些说明不了解的人操作电动工具。
电动工具在未经培训的用户手中是危险的。
- e) 保养电动工具。检查运动件是否调整到位或卡住，检查零件破损情况和影响电动工具运行的其他状况。如有损坏，电动工具应在使用前修理好。
许多事故由维护不良的电动工具引发。

中文

- f) 保持切削刀具锋利和清洁。

保养良好的有锋利切削刃的刀具不易卡住而且容易控制。

- g) 按照使用说明书，考虑作业条件和进行的作业来使用电动工具、附件和工具的刀头等。

将电动工具用于那些与其用途不符的操作可能会导致危险。

5) 维修

- a) 将你的电动工具送交专业维修人员，使用同样的备件进行修理。

这样将确保所维修的电动工具的安全性。

注意！

不可让儿童和体弱人士靠近工作场所。

应将不使用的工具存放在儿童和体弱人士接触不到的地方。

吹风机使用注意事项

1. 只能按产品铭牌指示的电压供电。

如果使用电压高于指示电压，转速将异常升高，并会导致人身伤害。

2. 使用时请勿将手或脸部靠近吹风机的开口。

否则会导致人身伤害。

3. 清洁带电区时，如配电盘，应将设备移至距离导体很安全的位置。

4. 请勿将吹风机的开口或进风口堵塞。

如果吹风机的开口被堵塞，则会导致电动机转速异常升高，从而损坏设备内部的叶片或导致人身伤害。电动机也可能会因为过热而导致火灾。

5. 请不要在具有易燃物品，如油漆，涂料，苯，稀释剂或汽油的场所使用设备。

也不要在此场所吸带入燃着的烟头等物品。

可能会导致爆炸或引起火灾。

6. 不要在含有大量化学物质的环境中使用设备。

塑料部件，如设备内部的叶片，可能会老化或断裂，从而导致人身伤害。

7. 如果您注意到该设备运转不正常，或发出异常噪音，应立即停止运转，并切断电源，然后要求设备经销商或HiKOKI授权服务中心对设备进行检修。

如果运转异常仍继续使用，可能导致人身伤害。

8. 如果设备不小心摔下，或撞击到别的物体，则应进行全面检查，以确定是否有开裂，破损或变形等。

如果设备开裂、破损或变形，将导致人身伤害。

9. 不要在靠近高热源的地方使用设备，如火炉旁。

如果靠近热源可能会引起火灾。

10. 使用吹风机吹扫粘粉或尘粒后应对设备进行全面检查。

粉末或尘粒可能被吸入并粘附在设备内部，从而导致叶片断裂或发生人身伤害。

11. 当设备仍在运转时，请不要将其放置在长椅或地板上。

可能导致人身伤害。

符号

警告！

如下所示的符号用于本机。使用前请务必理解其含意。



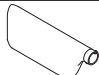
为降低伤害风险，用户必须阅读使用说明书

规格

电压	220 V ~
输入功率	550 W
空载转速	16000 /min
气压	5.5 kPa
空气体积	3.8 m ³ /min
重量（不含线缆）	1.7 kg

标准附件

除了主机（1 台）外，产品包中还包括表中所列的附件。

集尘袋		1
-----	---	---

用途

- 木材厂、烟厂、纱厂等的设备的清理。
- 修理厂的器具设备的清理。
- 吹风作业。

作业之前

1. 电源
确认所使用的电源与产品铭牌上标示的规格相符。
2. 电源开关
确认电源开关是否切断。若电源开关接通，则插头插入电源插座时电动工具将出其不意地立刻转动，从而招致严重事故。
3. 延伸线缆
若作业场所移到离开电源的地点，应使用足够长及牢固的延伸线缆，并且但实际作业时，尽量不要将延伸线缆拉得太长。
4. 安装喷嘴和集尘袋

喷嘴与集尘袋的安装与拆卸

1. 喷嘴的安装

将喷嘴内的销插入吹风口上的凹口，然后将喷嘴朝图 1 箭头所示方向转到底。要拆卸喷嘴时，请按与上述相反顺序进行。

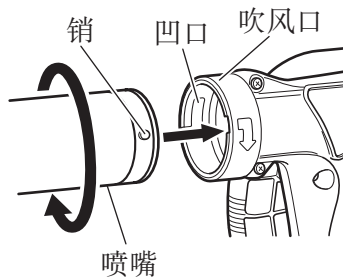


图 1

2. 将吹风机用于集尘袋时

(1) 集尘袋的安装

将集尘袋安装在吹风口上。安装步骤与上述的喷嘴安装步骤相同（图 2）。

(2) 喷嘴的安装

将喷嘴内的销插入进风口的凹口，然后将喷嘴朝图 3 中箭头所示方向转到底。

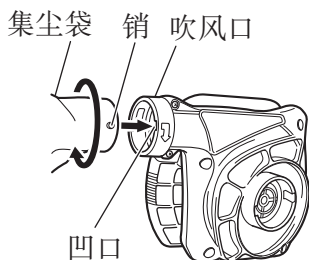


图 2

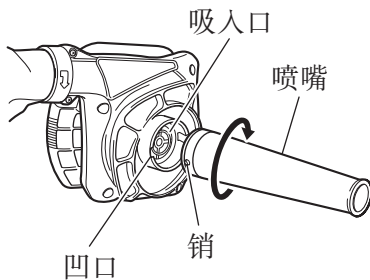


图 3

吹风机的使用方法

1. 拉扳机后再按下销挡的话，即使松开扳机，开关也会停留在接通 (ON) 位置，这样，即可提高工作效率又进行连接操作。再次拉扳机，销挡就被解除，松开扳机，就可关掉开关 (OFF)。
2. 集尘袋内的积尘过多的话，会降低吹风机的积尘效果。因此，必须经常将集尘袋倒空，以收到最佳积尘效果。

维护和检查

1. 检查安装螺钉

要经常检查安装螺钉是否紧固妥善。若发现螺钉松了，应立即重新扭紧，否则会导致严重的事故。

2. 检查炭刷（图 4）

电动机上的炭刷是一种消耗品，其磨损度一旦超出了“磨损极限”，电动机将发生故障。因此，磨损了的炭刷应即更换新件。此外，炭刷必须常保干净状态，这样才能在刷握里自由滑动。

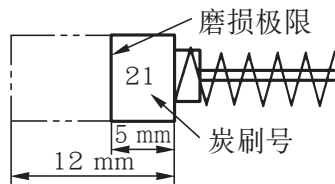


图 4

3. 炭刷的更换
用一字形头螺丝刀拆卸刷盖，炭刷就可简单地取下。
4. 电动机的维护
电动机绕线是电动工具的“心脏部”。
应仔细检查有无损伤，是否被油液或水沾湿。
5. 维修零部件一览表

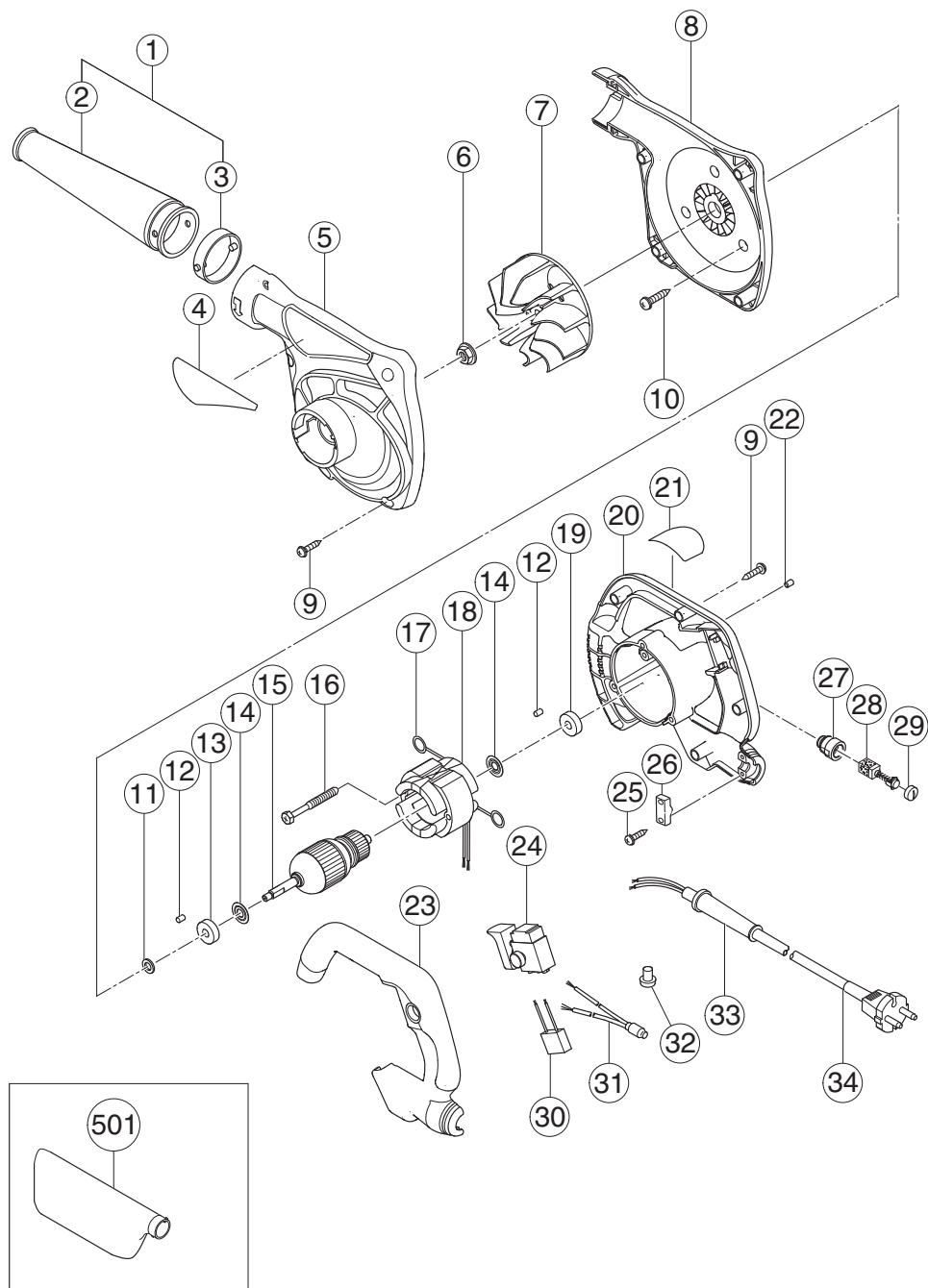
注意！

HiKOKI牌电动工具的维修、改造和检查须由经HiKOKI公司授权的维修中心进行。

当要求维修或其他保养服务时，若将此零部件一览表与电动工具一起呈交给经HiKOKI公司授权的维修中心，将有助于维修或保养工作。

在操作和维修电动工具时，必须遵守贵国制定的安全的有关规则和标准。

维修零部件一览表



项目号	代码号	使用数	备注
1	323-582	1	“2, 3”
2	————	1	
3	323-583	1	
4	————	1	
5	323-573	1	
6	323-572	1	M6
7	323-571	1	
8	323-570	1	
9	301-653	10	D4×20
10	305-507	3	D5×30
11	930-079	1	
12	931-701	2	
13	608-DDW	1	608DDW
14	982-631	2	
15	360-683E	1	220V-230V
16	980-864	2	D5×40
17	930-630	2	
18	340-602E	1	220V-230V “17”
19	608-DDW	1	608DDW
20	323-577	1	“22, 27”
21	————	1	
22	938-477	2	M5×8
23	323-574	1	
24	323-575	1	
25	984-750	2	D4×16
26	960-266	1	
27	957-571	2	
28	999-021	2	
29	931-266	2	
30	994-273	1	
31	303-837	2	
32	959-141	2	
33	307-217	1	D7.2
34	500-468Z	1	
501	323-587	1	

CONTENTS

GENERAL POWER TOOL SAFETY WARNINGS	10
CAUTIONS WHEN USING BLOWER.....	12
SYMBOL.....	13
SPECIFICATIONS.....	13
STANDARD ACCESSORIES	13
APPLICATIONS.....	14
PRIOR TO OPERATION.....	14
MOUNTING AND DISMOUNTING THE NOZZLE AND DUST BAG	14
HOW TO USE THE BLOWER	15
MAINTENANCE AND INSPECTION	15
SERVICE PARTS LIST	17

GENERAL POWER TOOL SAFETY WARNINGS

WARNING

Read all safety warnings and all instructions.

Failure to follow the warnings and instructions may result in electric shock, fire and/or serious injury.

Save all warnings and instructions for future reference.

The term “power tool” in the warnings refers to your mains-operated (corded) power tool or battery-operated (cordless) power tool.

1) Work area safety

a) Keep work area clean and well lit.

Cluttered or dark areas invite accidents.

b) Do not operate power tools in explosive atmospheres, such as in the presence of flammable liquids, gases or dust.

Power tools create sparks which may ignite the dust or fumes.

c) Keep children and bystanders away while operating a power tool.

Distractions can cause you to lose control.

2) Electrical safety

a) Power tool plugs must match the outlet.

Never modify the plug in any way.

Do not use any adapter plugs with earthed (grounded) power tools.

Unmodified plugs and matching outlets will reduce risk of electric shock.

b) Avoid body contact with earthed or grounded surfaces, such as pipes, radiators, ranges and refrigerators.

There is an increased risk of electric shock if your body is earthed or grounded.

c) Do not expose power tools to rain or wet conditions.

Water entering a power tool will increase the risk of electric shock.

- d) **Do not abuse the cord. Never use the cord for carrying, pulling or unplugging the power tool.**
Keep cord away from heat, oil, sharp edges or moving parts.
Damaged or entangled cords increase the risk of electric shock.
- e) **When operating a power tool outdoors, use an extension cord suitable for outdoor use.**
Use of a cord suitable for outdoor use reduces the risk of electric shock.
- f) **If operating a power tool in a damp location is unavoidable, use a residual current device (RCD) protected supply.**
Use of an RCD reduces the risk of electric shock.

3) Personal safety

- a) **Stay alert, watch what you are doing and use common sense when operating a power tool.**
Do not use a power tool while you are tired or under the influence of drugs, alcohol or medication.
A moment of inattention while operating power tools may result in serious personal injury.
- b) **Use personal protective equipment. Always wear eye protection.**
Protective equipment such as dust mask, non-skid safety shoes, hard hat, or hearing protection used for appropriate conditions will reduce personal injuries.
- c) **Prevent unintentional starting. Ensure the switch is in the off position before connecting to power source and/or battery pack, picking up or carrying the tool.**
Carrying power tools with your finger on the switch or energising power tools that have the switch on invites accidents.
- d) **Remove any adjusting key or wrench before turning the power tool on.**
A wrench or a key left attached to a rotating part of the power tool may result in personal injury.
- e) **Do not overreach. Keep proper footing and balance at all times.**
This enables better control of the power tool in unexpected situations.
- f) **Dress properly. Do not wear loose clothing or jewellery. Keep your hair, clothing and gloves away from moving parts.**
Loose clothes, jewellery or long hair can be caught in moving parts.
- g) **If devices are provided for the connection of dust extraction and collection facilities, ensure these are connected and properly used.**
Use of dust collection can reduce dust-related hazards.

4) Power tool use and care

- a) **Do not force the power tool. Use the correct power tool for your application.**
The correct power tool will do the job better and safer at the rate for which it was designed.
- b) **Do not use the power tool if the switch does not turn it on and off.**
Any power tool that cannot be controlled with the switch is dangerous and must be repaired.

English

- c) **Disconnect the plug from the power source and/or the battery pack from the power tool before making any adjustments, changing accessories, or storing power tools.**

Such preventive safety measures reduce the risk of starting the power tool accidentally.

- d) **Store idle power tools out of the reach of children and do not allow persons unfamiliar with the power tool or these instructions to operate the power tool.**

Power tools are dangerous in the hands of untrained users.

- e) **Maintain power tools. Check for misalignment or binding of moving parts, breakage of parts and any other condition that may affect the power tool's operation.**

If damaged, have the power tool repaired before use.

Many accidents are caused by poorly maintained power tools.

- f) **Keep cutting tools sharp and clean.**

Properly maintained cutting tools with sharp cutting edges are less likely to bind and are easier to control.

- g) **Use the power tool, accessories and tool bits etc. in accordance with these instructions, taking into account the working conditions and the work to be performed.**

Use of the power tool for operations different from those intended could result in a hazardous situation.

5) Service

- a) **Have your power tool serviced by a qualified repair person using only identical replacement parts.**

This will ensure that the safety of the power tool is maintained.

CAUTION

Keep children and infirm persons away.

When not in use, tools should be stored out of reach of children and infirm persons.

CAUTIONS WHEN USING BLOWER

1. **Use only the voltage shown on the nameplate to supply power.**
Using a voltage higher than shown will increase the rotation speed abnormally and can cause injuries.
2. **Do not put your hands or face near the blower opening during use.**
Doing so might lead to injuries.
3. **Remove this unit a safe distance away from electrical conductors when cleaning sections carrying electrical power such as the electrical panel.**
4. **Do not block the blower opening or intake.**
Blocking the blower opening will cause an increase in the motor rotation speed abnormally and might damage the vanes on the inner section of the unit or cause injuries. The motor might also overheat and cause a fire.
5. **Do not use in locations where inflammable materials such as lacquer, paint, benzene, thinner or gasoline are present. Also do not let items such as lighted cigarette butts be suctioned inside at such locations.**
Explosion or fires might result.

6. **Do not use in environments subject to heavy doses of chemicals, etc.**
Plastic sections such as the vanes on the inner section of the unit might weaken and break, and injuries might occur.
7. **If you notice the unit is operating poorly or making abnormal noises, immediately stop using and shut off the power switch. Request an inspection and repair from the dealer where you purchased the unit or a HiKOKI Authorized Service Center.**
Continuing to use while operating abnormally might cause injuries.
8. **If the unit is mistakenly dropped or strikes another object, make a thorough check of the unit for cracks, breakage or deformation, etc.**
Injuries might occur if the unit has cracks, breakage or deformation.
9. **Do not use near objects generating high heat such as stoves.**
Fires might occur if used near such locations.
10. **Make a thorough inspection if using the blower to blow or clean viscous powder or dust particles.**
Powder or dust particles might be suctioned in and adhere internally, causing the vanes to break or injuries to occur.
11. **Do not leave on locations such as benches or floors while still rotating.**
Injuries might occur.

SYMBOL

WARNING

The following show symbols used for the machine. Be sure that you understand their meaning before use.



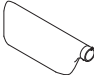
To reduce the risk of injury, user must read instruction manual.

SPECIFICATIONS

Voltage	220 V ~
Power Input	550 W
No-load speed	16000 /min
Air pressure	5.5 kPa
Air volume	3.8 m ³ /min
Weight (without cord)	1.7 kg

STANDARD ACCESSORIES

In addition to the main unit (1 unit), the package contains the accessories listed in the below.

Dust bag		1
----------	---	---

APPLICATIONS

- Cleaning facilities and equipment in lumbermills, cigarette-making plants, spinning mills, etc.
- Cleaning devices and equipment in repair shops.
- Blowing operation.

PRIOR TO OPERATION

1. Power source
Ensure that the power source to be utilized conforms to the power requirements specified on the product nameplate.
2. Power switch
Ensure that the power switch is in the OFF position. If the plug is connected to a receptacle while the power switch is in the ON position, the power tool will start operating immediately, which could cause a serious accident.
3. Extension cord
When the work area is removed from the power source, use an extension cord of sufficient thickness and rated capacity. The extension cord should be kept as short as practicable.
4. Mount the nozzle and dust bag

MOUNTING AND DISMOUNTING THE NOZZLE AND DUST BAG

1. Mounting the Nozzle
Insert the pin located outside the nozzle into the notch provided on the blast port, and fully turn the nozzle in the direction indicated by the arrow in **Fig. 1**.
To dismount the nozzle, follow the above procedures in reverse.
2. When using the Blower for dust collection
(1) Mounting the Dust Bag
Mount the dust bag on the blast port, following the same procedures described above for mounting of the nozzle (**Fig. 2**).

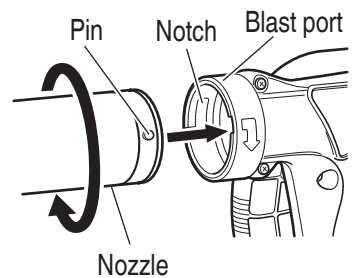


Fig. 1

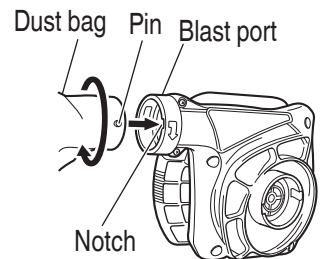


Fig. 2

- (2) **Mounting the Nozzle**
 Insert the pin located on the outside of the nozzle into the notch provided on the suction port, and fully turn the nozzle in the direction indicated by the arrow in **Fig. 3**.

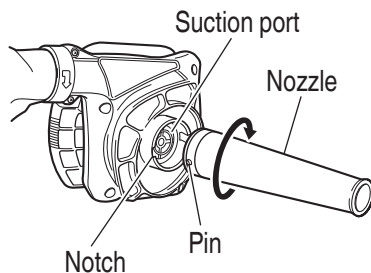


Fig. 3

HOW TO USE THE BLOWER

1. By pulling the trigger and pushing the stopper, the switch will remain in the ON position even when the trigger is released, promoting efficient, continuous operation. By pulling the trigger again, the stopper is disengaged and the switch is turned OFF when the trigger is released.
2. An excessively large volume of dust in the dust bag will reduce the dust collecting efficiency of the blower. Frequently empty the dust bag to ensure maximum dust collecting efficiency.

MAINTENANCE AND INSPECTION

1. **Inspecting the mounting screws**
 Regularly inspect all mounting screws and ensure that they are properly tightened. Should any of the screws be loose, retighten them immediately. Failure to do so could result in serious hazard.
2. **Inspecting the carbon brushes (Fig. 4)**
 The motor employs carbon brushes which are consumable parts. Since an excessively worn carbon brush can result in motor trouble, replace the carbon brush with a new one having the same carbon brush No. shown in the figure when it becomes worn to or near the "wear limit". In addition, always keep carbon brushes clean and ensure that they slide freely within the brush holders.
3. **Replacing carbon brushes**
 Disassemble the brush cap with a screwdriver. The carbon brush can then easily removed.
4. **Maintenance of the motor**
 The motor unit winding is the very "heart" of the power tool. Exercise due care to ensure the winding does not become damaged and/or wet with oil or water.

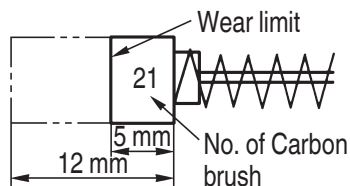


Fig. 4

English

5. Service parts list

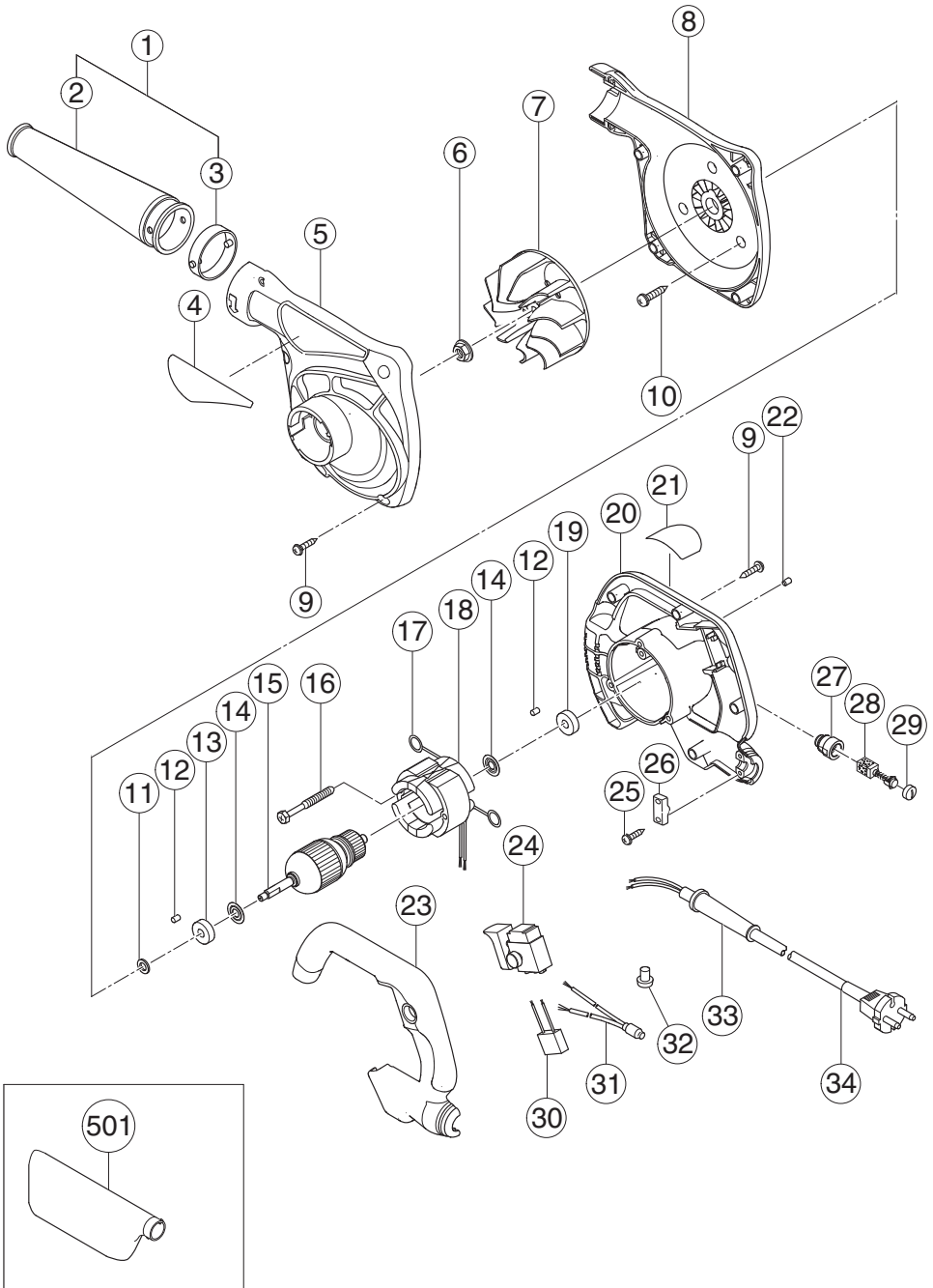
CAUTION

Repair, modification and inspection of HiKOKI Power Tools must be carried out by a HiKOKI Authorized Service Center.

This Parts List will be helpful if presented with the tool to the HiKOKI Authorized Service Center when requesting repair or other maintenance.

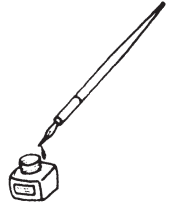
In the operation and maintenance of power tools, the safety regulations and standards prescribed in each country must be observed.

SERVICE PARTS LIST



English

Item No.	Code No.	No. Used	Remarks
1	323-582	1	"2, 3"
2	_____	1	
3	323-583	1	
4	_____	1	
5	323-573	1	
6	323-572	1	M6
7	323-571	1	
8	323-570	1	
9	301-653	10	D4x20
10	305-507	3	D5x30
11	930-079	1	
12	931-701	2	
13	608-DDW	1	608DDW
14	982-631	2	
15	360-683E	1	220V-230V
16	980-864	2	D5x40
17	930-630	2	
18	340-602E	1	220V-230V "17"
19	608-DDW	1	608DDW
20	323-577	1	"22, 27"
21	_____	1	
22	938-477	2	M5x8
23	323-574	1	
24	323-575	1	
25	984-750	2	D4x16
26	960-266	1	
27	957-571	2	
28	999-021	2	
29	931-266	2	
30	994-273	1	
31	303-837	2	
32	959-141	2	
33	307-217	1	D7.2
34	500-468Z	1	
501	323-587	1	



服务中心
高壹工机商业(上海)有限公司
上海市闵行区浦江工业园区三鲁路3585号7幢3楼

制造商
福建高壹工机有限公司
福建省福州市福兴投资区湖塘路

Koki Holdings Co., Ltd.

110
编号: C99133827 F
发行日期: 2021年 10月
中国印刷